



Perspective™

by PPM

**CONNECT INSTALLATION
AND CONFIGURATION GUIDE**

Perspective by PPM™

Version 1.1

Printed October 2014

Copyright © 2014 PPM 2000 Inc. and its licensors. All rights reserved.

PPM 2000, the PPM 2000 logo, Perspective by PPM 2000, the Perspective by PPM 2000 logo, Perspective by PPM, the Perspective by PPM logo, Perspective Focal Point, and the Incident management from every angle logo are trademarks or registered trademarks of PPM 2000 Inc.

Information in this document is subject to change without notice.

Companies, names, and data used in the examples herein are fictitious unless otherwise noted.

Although every precaution has been taken in preparation of this document, PPM 2000 Inc. assumes no responsibility for errors or omissions. Neither is any liability assumed for damages resulting from the use of the information contained herein. |

Permission to modify and distribute this document strictly for the purpose of internal user training is hereby granted, provided that it is made evident the document has been modified, and that all copies contain all proprietary notices set forth in or on the original version. PPM 2000 Inc. assumes no responsibility for errors or omissions resulting from the modification of this document. PPM 2000 Inc. expressly waives all liability assumed for damages resulting from the modification of the information contained herein. Notwithstanding the permission granted herein, no part of this document may otherwise be reproduced, transmitted, disseminated or distributed, in any form or by any means, electronic or mechanical, for any other purpose, without the express written permission of PPM 2000 Inc.

Adobe, the Adobe logo, Acrobat, and Reader are trademarks or registered trademarks of Adobe Systems Incorporated in the United States and other countries.

Apple, the Apple logo, iPad, iPhone, iPod, iPod touch, and iTunes are trademarks of Apple Inc., registered in the U.S. and other countries. App Store is a service mark of Apple Inc.

BlackBerry, SureType, SurePress, and related trademarks, names, and logos are the property of Blackberry Limited and are registered and/or used in the U.S. and countries around the world.

Brivo ACS WebService is a registered trademark of Brivo Systems LLC.

dtSearch is a registered trademark of dtSearch Corp.

Google, Google Chrome, and Android are trademarks or registered trademarks of Google Inc.

i2, the i2 logo, and i2 Analyst's Notebook are registered trademarks of IBM Corporation.

Identity Resolution Engine (IRE) is a trademark of Infoglide Software Corporation.

IDV Solutions and Visual Command Center are trademarks or registered trademarks of IDV Solutions, LLC.

Lenel, the Lenel logo, OnGuard, and the Lenel OpenAccess Alliance Program (OAAP) are trademarks or registered trademarks of Lenel Systems International Inc.

Microsoft, Windows, Windows Vista, Windows Server, SQL Server, Access, Internet Explorer, Excel, PowerPoint, Outlook, Active Directory, Visual Studio, Visual Basic, the Office logo, .NET logo, and Microsoft Gold Independent Software Vendor (ISV) Partner logo are trademarks or registered trademarks of Microsoft Corporation in the U.S. and other countries.

MIR3 is a service mark of MIR3, Inc. inAccountPortal, inTechCenter, inAlertCenter, inEnterprise, and Intelligent Notification are trademarks or registered trademarks of MIR3, Inc.

Mozilla, the Mozilla logo, Firefox, and the Firefox logo are trademarks or registered trademarks of the Mozilla Foundation.

QlikTech, the QlikTech logo, and QlikView are trademarks of QlikTech International AB.

Samsung, Galaxy S, and Galaxy Note are trademarks of Samsung Electronics Co., Ltd.

Wi-Fi is a registered trademark of the Wi-Fi Alliance.

All other products, brands, names, or trademarks mentioned in this document may be trademarks or registered trademarks of their respective owners.

Contents

Welcome to Perspective Connect by PPM 2000.....	2
About Perspective Connect.....	2
Connectors	3
Prerequisites	6
Perspective Connect	6
Connector: Lenel OnGuard.....	6
Connector: AMAG SMS	6
Connector: Code Blue.....	6
Installation and Configuration.....	7
Perspective Connect	7
Connector: Lenel OnGuard.....	9
Connector: AMAG SMS	11
Connector: Code Blue.....	13
Tips and Additional Information	16
Enabling the Lenel OnGuard DataConduit Service.....	16
Contact Information.....	17
Technical Support	17
PPM 2000.....	17

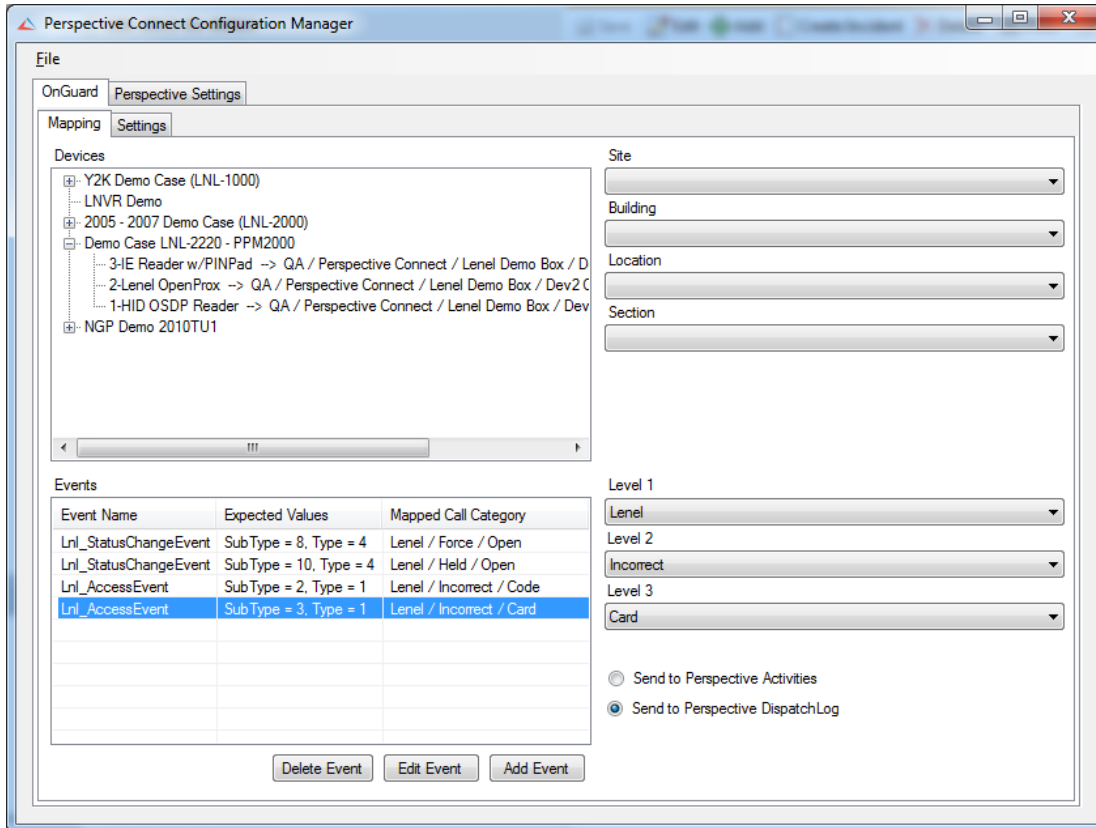
Welcome to Perspective Connect by PPM 2000

About Perspective Connect

Perspective Connect is a companion service to Perspective Integration Services, used to streamline the integration of devices and their event data. By using Perspective Connect with "Connectors" to supported external systems, you are able to configure integrations to feed data to Perspective—either the Activities Data Form or the DispatchLog module—out of the box and without extensive custom development work.

Perspective Connect includes an easy to use Configuration Manager that allows you to create mappings for each Connector added to the system. Perspective Connect will then pull information from the devices mapped, based on events it is monitoring, and send that data to Perspective via Integration Services using pre-configured mapping. When that data is sent to DispatchLog, your Dispatcher can determine the appropriate response; if the data is sent to a Perspective Activity, it is available to all of Perspective's incident management and reporting features.

The Perspective Connect Service and Configuration Manger are included with Perspective but do require one or more Connectors to be purchased before integrating with external systems.



Connectors are specifically developed for each third party product we integrate with via the Perspective Connect service; each is downloaded and integrated separately. Once a Connector is integrated, its connection configuration tab will be added to Perspective Connect. Connectors are designed specifically for systems with multiple devices and events raised by those devices.

An example: access control devices can raise events for persons granted access, persons denied access or forced entry incidents. Each of these events can be mapped with the appropriate location and category/priority. Another example: video systems can create events such as motion detected, signal lost and unattended package detected.

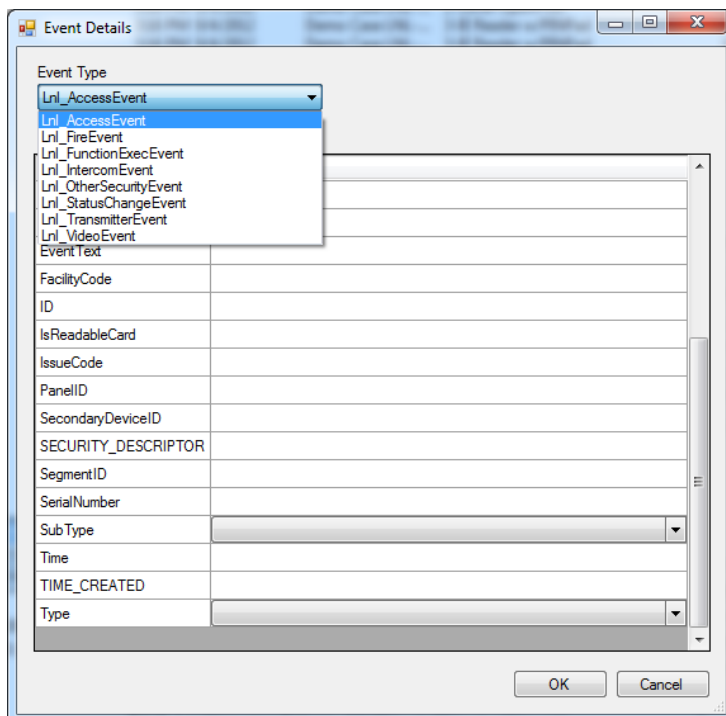
Though Perspective Connect works with both On Premise and Hosted Perspective instances, the Perspective Connect Service itself must be installed within the environment of the third party application that will connect with Perspective.

Connectors

Lenel OnGuard

Perspective's first out-of-the-box connector launches an integration between Perspective and Lenel OnGuard. Using the connector, OnGuard events are automatically sent to Perspective, leading to faster, more efficient emergency response and reduced manual data entry.

When an actionable event is triggered in OnGuard, the connector picks it up and automatically handles the event depending on how the Perspective Connect Configuration Manager is set-up. Each OnGuard event type—including subtypes—can be sent to either an Activity form in Perspective or to a DispatchLog event for immediate action.



Perspective's Lenel OnGuard Connector has received Lenel factory certification, and PPM is a member of the Lenel OpenAccess Alliance Program (OAAP). Please contact your account manager for pricing information.

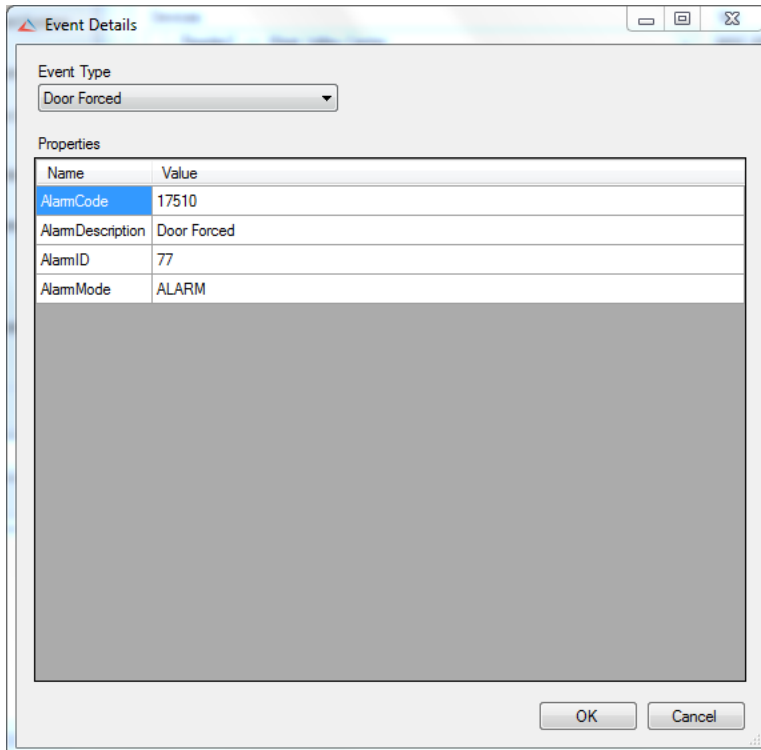
AMAG Symmetry

Perspective's out-of-the-box connector has integration between Perspective and AMAG Symmetry with AMAG's XML Open Integration Module. Using the connector, AMAG Symmetry events are automatically sent to Perspective, leading to faster, more efficient emergency response and reduced manual data entry.

When an actionable event is triggered in AMAG Symmetry, the connector picks it up and automatically handles the event depending on how the Perspective Connect Configuration Manager is set up. Each Symmetry event type can be sent to either an Activity form in Perspective or to a DispatchLog event for immediate action.'

Set connection and account information to AMAG Service through easy to use interface Capture of AMAG alarms from connected service (Perspective Connect). Customize aspects to create Perspective Activities or Dispatch requests. Map the location of AMAG Alarm Point Devices. Use data captured from each system to generate Activity Reports and Incident Reports used for statistical analysis.

Perspective's AMAG Symmetry Connector has received AMAG factory certification. PPM has partnered with AMAG in Incident Reporting and Alarm Management Integrations.



Code Blue

Perspective's out-of-the-box connector has integration between Perspective and Code Blue call stations through Code Blue's ToolVox. Using the connector, Code Blue calls are automatically logged into Perspective, leading to faster, more efficient emergency response and reduced manual data entry.

When a call station event is triggered in Code Blue, the connector picks it up and automatically handles the event depending on how the Perspective Connect Configuration Manager is set up. Each Code Blue event type, such as dial, hang-up, and link, can be sent to either an Activity form in Perspective or to a DispatchLog event for immediate action.

Additional Connectors

Additional Connectors are currently in development for a variety of third party systems.

Prerequisites

Perspective Connect

- Perspective Version 3.3 or better. (Automatically met with Perspective Hosted.)
- Perspective Integration Services 3.3 R2 or better. (Automatically met with Perspective Hosted.)
- Perspective Connect requires that the Microsoft .Net Framework 4.0 is installed on the system.
- *If using Perspective DispatchLog:* Perspective DispatchLog Call Category Rollup items that are mapped to device events MUST have a default Priority setup in Perspective administration.

Connector: Lenel OnGuard

- Lenel OnGuard 2010 or Lenel OnGuard 2013 SP1, Version 6.5 or 6.6.
- The OnGuard DataConduit Service must be running.

Connector: AMAG SMS

- AMAG Symmetry SMS and smsXMLWebService Versions 7.0.1.

Connector: Code Blue

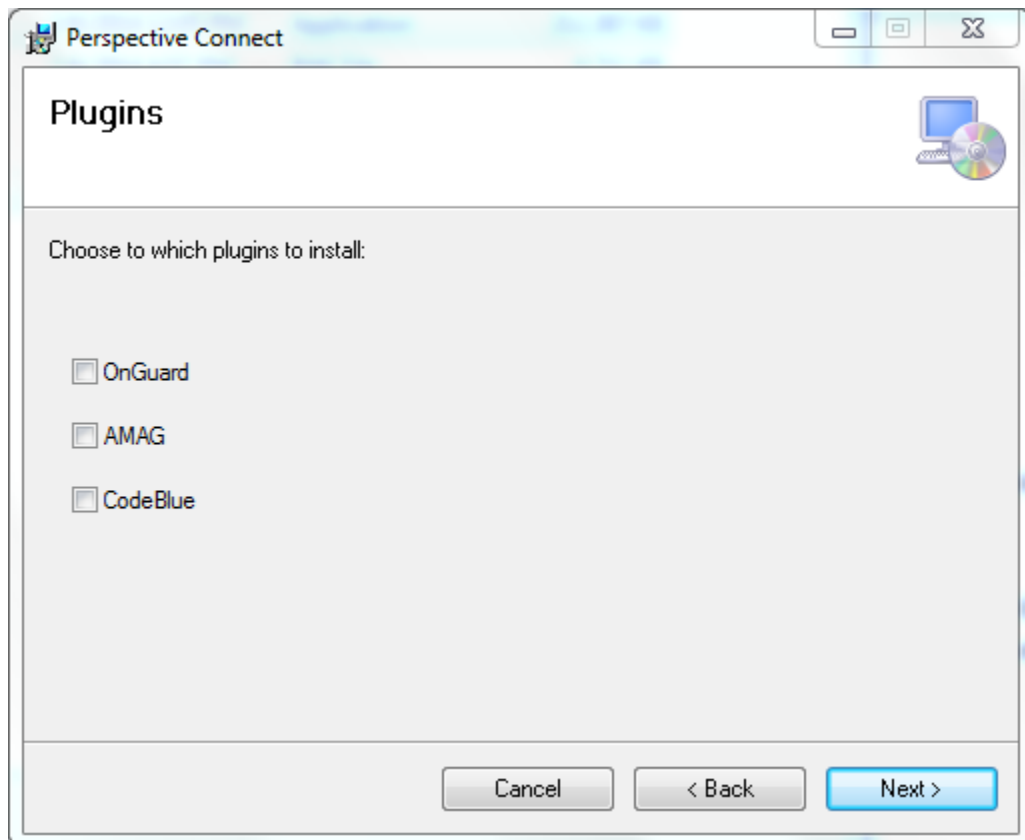
- EMS API Version 1.1 or ToolBox greater than Version 2.0.

Installation and Configuration

Note: Installation files for On Premise installations can be obtained by PPM 2000. Please contact us for additional details. Follow Perspective Connect's installation and configuration instructions before installing connectors.

Perspective Connect

1. Install Perspective Connect:
 - a. Run **PerspectiveConnect.msi** from your Perspective Connect installation package.
 - b. Select **Configuration Manager and Connect Service**.
 - c. Click **Next**.
 - d. Select **OnGuard**, **AMAG**, and/or **Code Blue**.



Note: The license module for each connector being used must be available on Perspective Services.

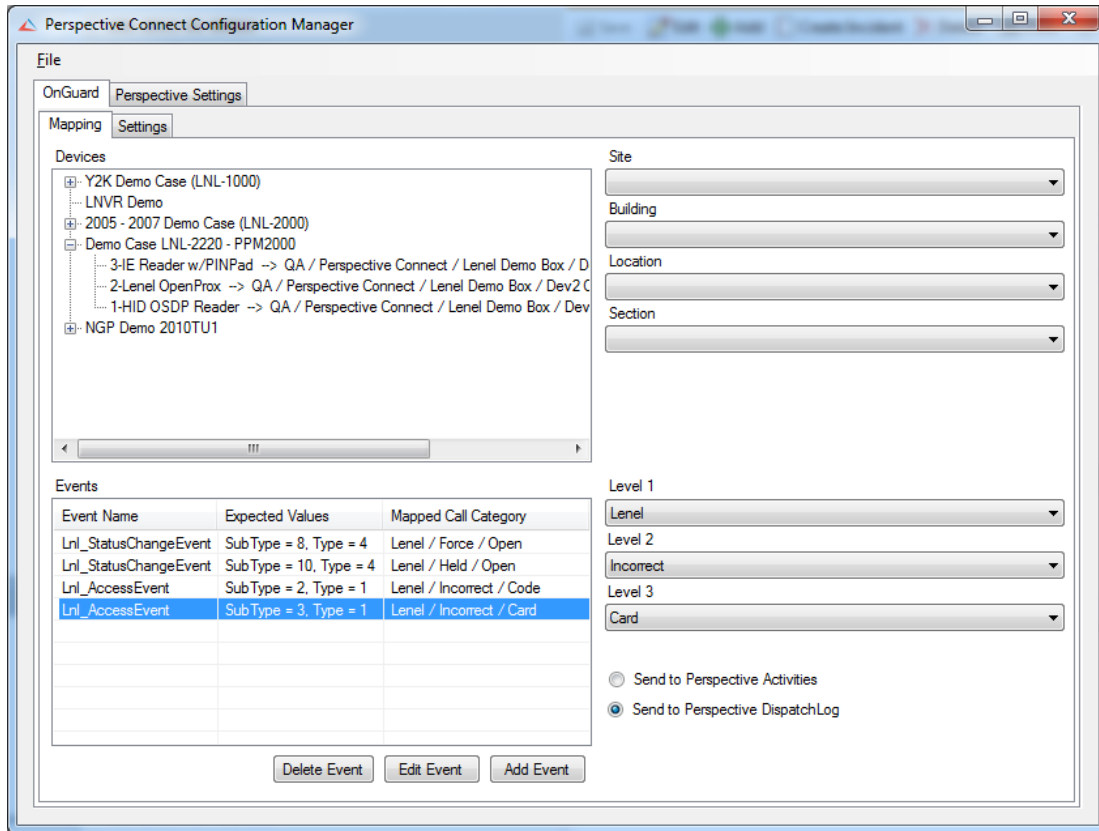
- e. Click **Next**.
 - f. Enter a **Database Connection String** for an existing database you've selected to be the Perspective Connect database. Click **Next**.
 - g. Enter the path to install **Perspective Connect** to, and then click **Next**.
 - h. Click **Next**.
 - i. Click **Close**.
2. Setup the Perspective Connect database. Using a SQL query tool (e.g., Microsoft SQL Server Management Studio), execute **update.sql** against an existing database. This file can be found in the path Perspective Connect was installed to.
 3. Configure the connection to Perspective Integration Services:
 - a. In the Windows Start menu, click on **All Programs > PPM 2000 Inc > Perspective Connect > Perspective Connect Configuration Manager**.
 - b. On the **Perspective Settings** tab, fill in all of the settings values then click **Refresh Connection**.

*Note: **Services URL** should be set to the URL for Integration Services (e.g., <https://staging.ppm2000.com/IntegrationServices32>).*

4. If you need the Perspective Connect Service to run under the credentials of the Local Service account then following these steps:
 - a. In the Windows Start menu, click on **All Programs > Administrative Tools > Services**.
 - b. In the list of services, find **Perspective Connect** and double click it.
 - c. Select the **Log On** tab.
 - d. Enter the user name and password of the account (a local/domain Windows account) you want to this service to use.
 - e. Click **OK**.

Connector: Lenel OnGuard

1. Ensure the DataConduIT service is enabled. For more information, see the [Enabling the Lenel OnGuard DataConduIT Service](#) sub-section, under [Tips and Additional Information](#).
2. Configure a Windows account that will be used to connect to OnGuard. The account must have the **Enable Account** and **Execute Methods** permissions to the **root\OnGuard** WMI namespace hosted on the OnGuard server. Refer to the Microsoft Support article <http://support.microsoft.com/kb/325353> for further instructions.
3. Configure an OnGuard account that will be used to connect Perspective to OnGuard:
 - a. Assign a **Systems Permissions Group** that has the **DataConduIT Service** permission to the OnGuard account.
 - b. Create a directory in OnGuard which points to the user directory that contains the Windows account identified in step 2 above. Refer to the **Add a Directory** section in the **Directories Folder** chapter of the **OnGuard System Administration User Guide** for further instructions.
 - c. Link the account to the Windows account mentioned in step 2 above. Refer to the **Link a User Account to a Directory Account** section in the **Users Folder** chapter of the **OnGuard System Administration User Guide** for further instructions.
4. Configure the connection to OnGuard and create device/event mappings:
 - a. If the Perspective Connect Configuration Manager is not already running, run it (Windows Start menu, click on **All Programs > PPM 2000 Inc > Perspective Connect > Perspective Connect Configuration Manager**).
 - b. On the **OnGuard** tab and **Settings** sub-tab, fill in all of the settings values then click **Refresh Connection**. Note the following:
 - i. If **UseProcessIdentity** is set to **true**, the connection to OnGuard will use the credentials of the current identity running on the process.
 - ii. If **UseProcessIdentity** is set to **false**, the connection to OnGuard will use the credentials specified by the Username and Password settings.
 - iii. If the **Perspective Connect Service** or **Perspective Connect Configuration Manager** is running on the same machine as the OnGuard server, you **MUST** set **UseProcessIdentity** to **true**.
 - iv. Set Auto-Acknowledge Event to true, to have Connect acknowledge events in OnGuard that are mapped to Perspective. Set to false to manually acknowledge events in OnGuard.
 - c. On the **OnGuard** tab and **Mapping** sub-tab, create device/event mappings as required:



- i. Use the **Devices** list and the **Site**, **Building**, **Location** and **Section** drop-down lists to specify devices to monitor and map to the corresponding site.
- ii. Use the **Events** list and the **Level 1**, **Level 2** and **Level 3** drop-down lists to determine the Activity Call Category to send to Perspective.
- iii. Use the **Send to Perspective Activities** or **Send to Perspective DispatchLog** radio buttons to determine whether the mapped device/event combination either creates an Activity record in Perspective Data Forms or a DispatchLog Activity requiring a response.

Note: Mapped Perspective Call Categories must have an associated Default Priority. This is handled in Perspective Administration.

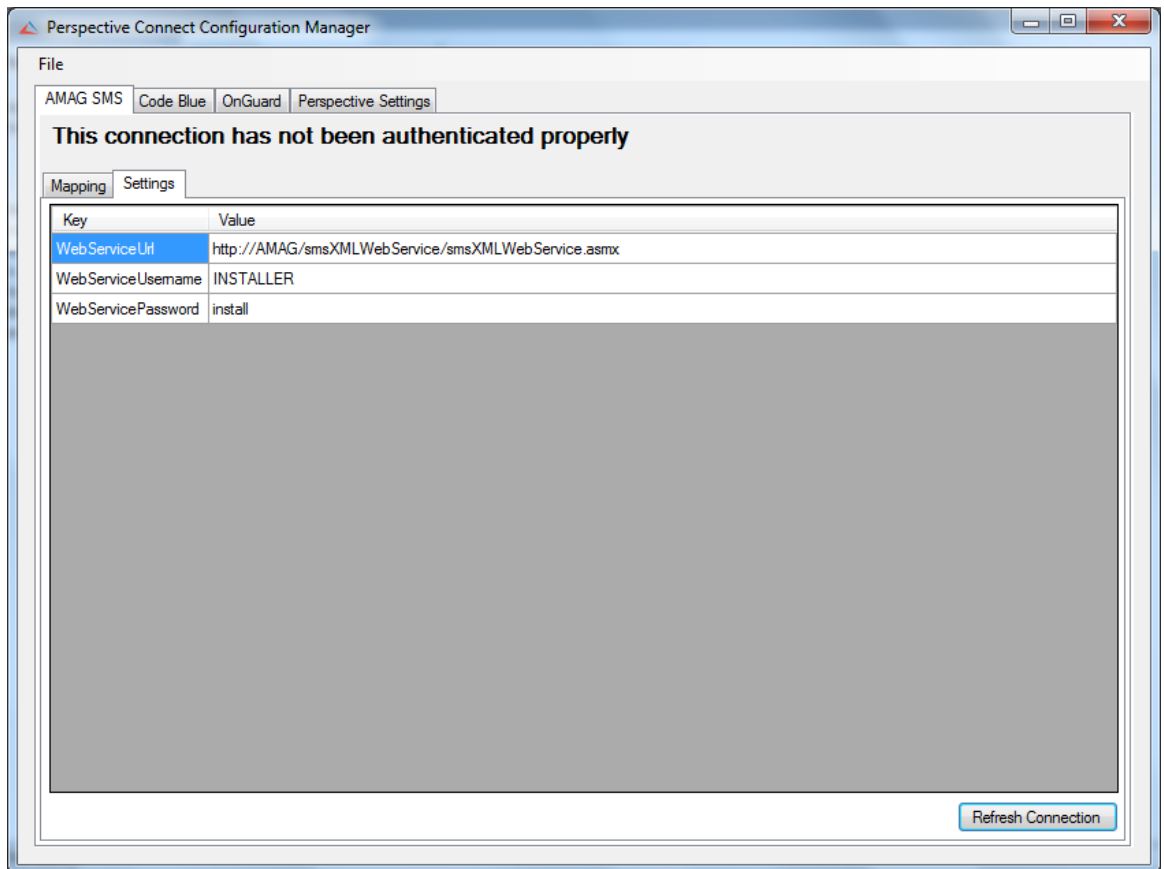
- d. Click **File**, then **Save**.
5. Restart the Perspective Connect Windows service.

Connector: AMAG SMS

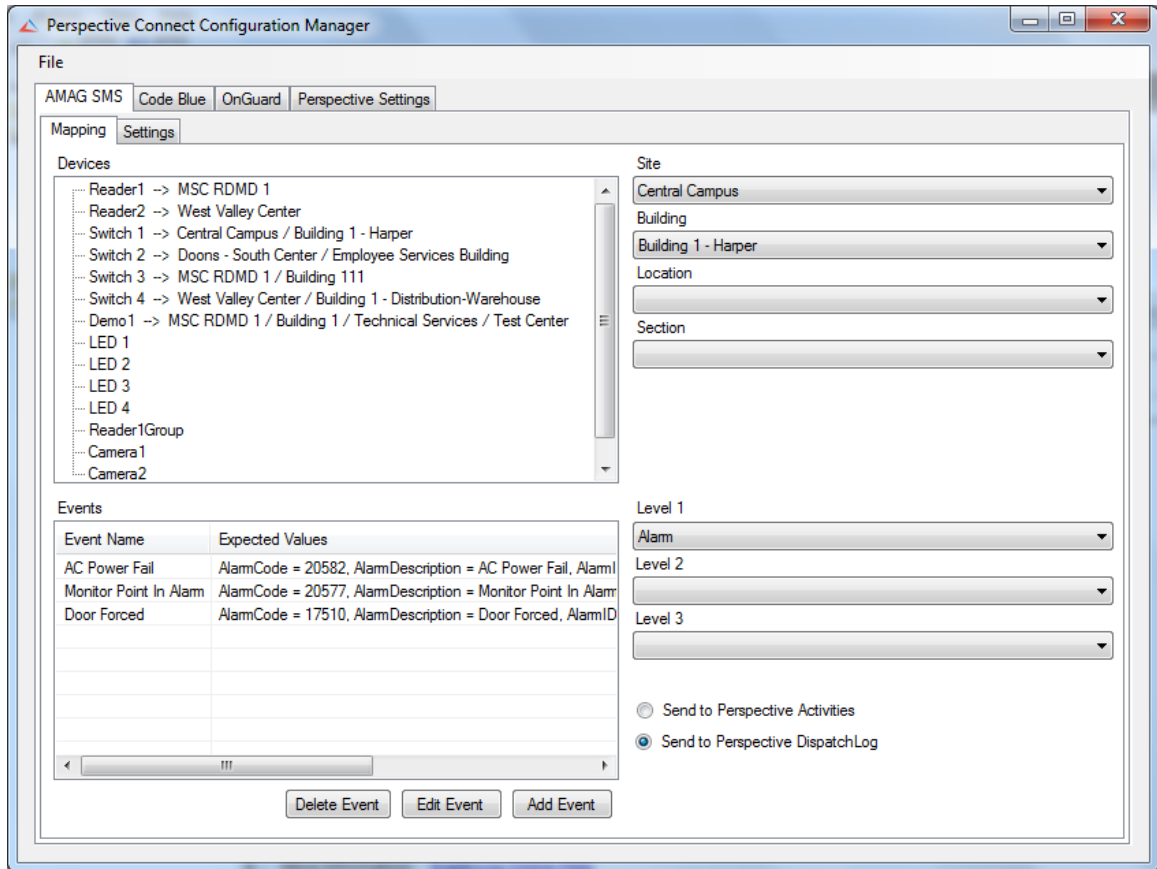
1. Ensure the XML Symmetry Service is installed and running.

Note: If the Symmetry indicator shield on the system tray is green, the service is ready for Perspective Connect.

2. Configure the connection to AMAG SMS and create device/event mappings:
 - a. If the Perspective Connect Configuration Manager is not already running, run it (Windows Start menu, click on **All Programs > PPM 2000 Inc > Perspective Connect > Perspective Connect Configuration Manager**).
 - b. On the **AMAG** tab and **Settings** sub-tab, fill in all of the settings values then click **Refresh Connection**. Note the following:
 - I. WebServiceUrl should be set to `http://<Server Name>/smsXMLWebService/smsXMLWebService.asmx`.



- II. WebServiceUsername and WebServicePassword should be set to a user account that has access to Symmetry alarms. On the **AMAG SMS** tab and **Mapping** sub-tab, create device/event mappings as required:



- c. Use the Devices list and the Site, Building, Location and Section drop-down lists to specify devices to monitor and map to the corresponding site.
- d. Use the **Events** list and the **Level 1**, **Level 2** and **Level 3** drop-down lists to determine the Activity Call Category to send to Perspective.
- e. Use the **Send to Perspective Activities** or **Send to Perspective DispatchLog** radio buttons to determine whether the mapped device/event combination either creates an Activity record in Perspective Data Forms or a DispatchLog Activity requiring a response.

Note: Mapped Perspective Call Categories must have an associated Default Priority. This is handled in Perspective Administration.

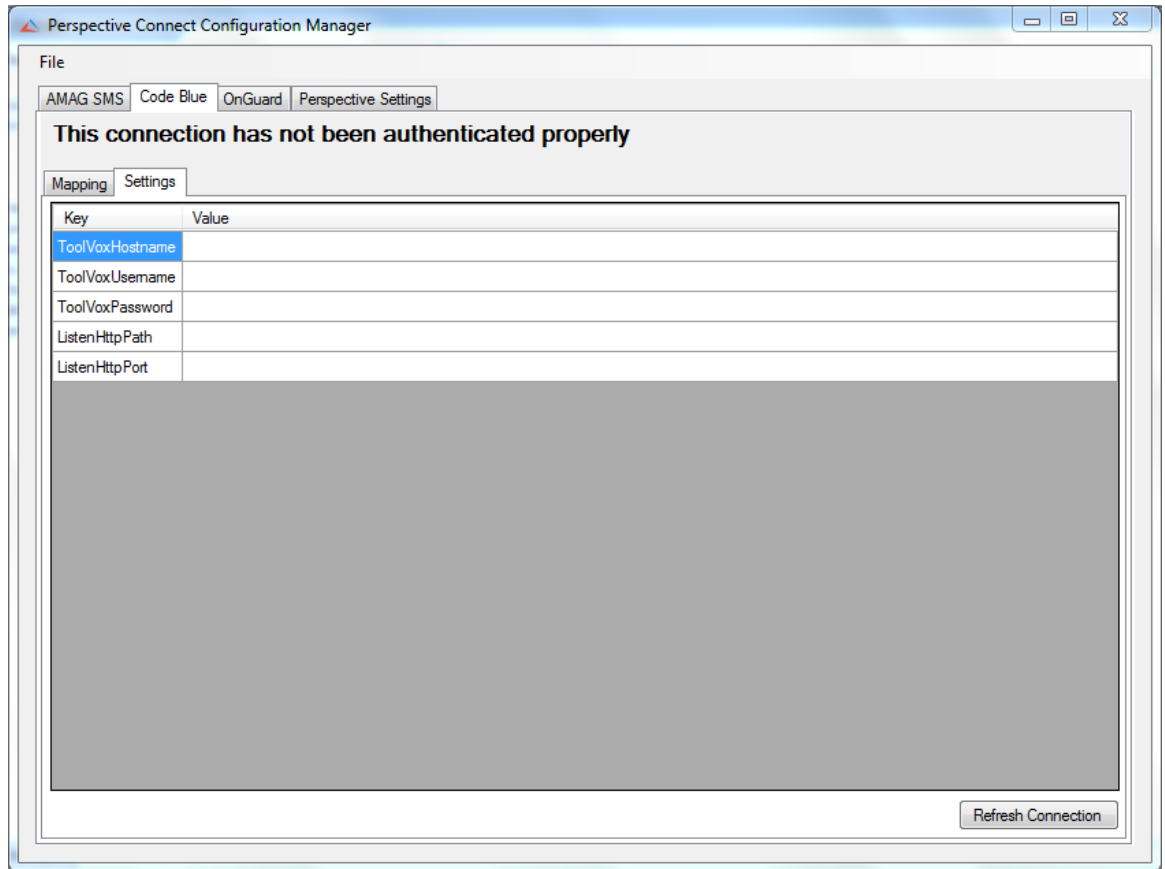
- f. Click **File**, then **Save**.
6. Restart the Perspective Connect Windows service.

Connector: Code Blue

Note: Code Blue only works on SIP phones.

1. Ensure the DataConduIT service is enabled.
2. Configure the connection to CodeBlue and create device/event mappings:
 - a. If the Perspective Connect Configuration Manager is not already running, run it (Windows Start menu, click on **All Programs > PPM 2000 Inc > Perspective Connect > Perspective Connect Configuration Manager**).
 - b. On the **Code Blue** tab and **Settings** sub-tab, fill in all of the settings values then click **Refresh Connection**.
 - I. ToolVoxHostName should contain the host name of the ToolVox Server.
 - II. ToolVoxUsername and ToolVoxPassword should contain the corresponding user account information that has access to ToolVox services.
 - III. ListeningHttpPath should contain a <Connect Host Name>/<an identifiable unique string>
 - IV. ListeningHttpPort will need to be a port that ToolVox can communicate with the Perspective Connect Host. The Host machine will need the corresponding port firewall open.

Note: The Path in ListeningHttpPath and ListeningHttpPort, must be the same as in Toolvox EMS API Settings.



- Inbound Routes
- Announcements
- Blacklist
- CallerID Lookup Sources
- Day/Night Control
- Follow Me
- IVR
- Queue Priorities
- Queues
- Ring Groups
- Time Conditions
- Time Groups
- Internal Options & Configuration**
- Callback
- Conferences
- DISA
- Languages
- Misc Applications
- Misc Destinations
- Music on Hold
- PIN Sets
- Parking Lot
- Phone Restart
- System Recordings
- VoiceMail Blasting
- Third Party Addon
- Custom Contexts
- Custom Contexts Times
- Set CallerID

Delete Maps

EMS Agents

Select extensions to designate as EMS agents.

To select multiple extensions, hold down the Ctrl key and click each extension to toggle it on or off.

100. Test Phone 1

← An Agent must be selected here

Update EMS Agents

Copy To Server

Specify connection information for a SMB (Windows) share for EMS Records archiving.

Server

Share

Username

Password

Update Server Information

EMS API

EMS API Settings that must match Connector settings

- c. On the **Code Blue** tab and **Mapping** sub-tab, create device/event mappings as required:
 - i. Use the **Devices** list and the **Site**, **Building**, **Location** and **Section** drop-down lists to specify devices to monitor and map to the corresponding site.
 - ii. Use the **Events** list and the **Level 1**, **Level 2** and **Level 3** drop-down lists to determine the Activity Call Category to send to Perspective.
 - iii. Use the **Send to Perspective Activities** or **Send to Perspective DispatchLog** radio buttons to determine whether the mapped device/event combination either creates an Activity record in Perspective Data Forms or a DispatchLog Activity requiring a response.

Note: Mapped Perspective Call Categories must have an associated Default Priority. This is handled in Perspective Administration.

- d. Click **File**, then **Save**.
7. Restart the Perspective Connect Windows service.

Tips and Additional Information

Enabling the Lenel OnGuard DataConduIT Service

To enable Lenel OnGuard's DataConduIT Service:

1. Open OnGuard System Administration.
2. In the menu click **Administration > System Options**.
3. In the **General Systems Options** tab, ensure that **Generate software events** is checked.
4. On the server running OnGuard, click on the Windows Start menu, click on **All Programs > Administrative Tools > Services**.
5. Ensure the following have their **Status** set to **Started** and **Startup Type** set to **Automatic**:
 - a. LS DataConduIT Service.
 - b. LS License Server.
 - c. LS Linkage Server.
 - d. LS Login Driver.
6. On the server running OnGuard, enable the **Windows Management Instrumentation (WMI-In) Inbound Rule** in the Windows Firewall.

Contact Information

Technical Support

Toll Free: 1-877-776-2995
Phone: (780) 448-0616
Email: support@ppm2000.com

PPM 2000

Toll Free: 1-888-PPM-9PPM (1-888-776-9776)
Phone: (780) 448-0616
Fax: (780) 448-0618
Email: information@ppm2000.com
Web Site: <http://www.ppm2000.com>

WHEN YOU THINK 'INCIDENT MANAGEMENT' — THINK PPM.
www.ppm2000.com

Copyright © PPM 2000 Inc. All rights reserved. PPM 2000, the PPM 2000 logo, Perspective by PPM 2000, the Perspective by PPM 2000 logo, Perspective by PPM, the Perspective by PPM logo and Perspective Focal Point are trademarks or registered trademarks of PPM 2000 Inc. Printed in Canada 09/13.

