

Perspective by PPM™

Version 4.6.1

Printed October 2015

Copyright © 2015 PPM 2000 Inc. and its licensors. All rights reserved.

PPM 2000, the PPM 2000 logo, Perspective by PPM 2000, the Perspective by PPM 2000 logo, Perspective by PPM, the Perspective by PPM logo, Perspective Focal Point, and the Incident management from every angle logo are trademarks or registered trademarks of PPM 2000 Inc.

Information in this document is subject to change without notice.

Companies, names, and data used in the examples herein are fictitious unless otherwise noted.

Although every precaution has been taken in preparation of this document, PPM 2000 Inc. assumes no responsibility for errors or omissions. Neither is any liability assumed for damages resulting from the use of the information contained herein.

Permission to modify and distribute this document strictly for the purpose of internal user training is hereby granted, provided that it is made evident the document has been modified, and that all copies contain all proprietary notices set forth in or on the original version. PPM 2000 Inc. assumes no responsibility for errors or omissions resulting from the modification of this document. PPM 2000 Inc. expressly waives all liability assumed for damages resulting from the modification of the information contained herein. Notwithstanding the permission granted herein, no part of this document may otherwise be reproduced, transmitted, disseminated or distributed, in any form or by any means, electronic or mechanical, for any other purpose, without the express written permission of PPM 2000 Inc.

Adobe, the Adobe logo, Acrobat, and Reader are trademarks or registered trademarks of Adobe Systems Incorporated in the United States and other countries.

Apple, the Apple logo, iPad, iPhone, iPod, iPod touch, and iTunes are trademarks of Apple Inc., registered in the U.S. and other countries. App Store is a service mark of Apple Inc.

BlackBerry, SureType, SurePress, and related trademarks, names, and logos are the property of Blackberry Limited and are registered and/or used in the U.S. and countries around the world.

Brivo ACS WebService is a registered trademark of Brivo Systems LLC.

dtSearch is a registered trademark of dtSearch Corp.

Google, Google Chrome, and Android are trademarks or registered trademarks of Google Inc.

i2, the i2 logo, and i2 Analyst's Notebook are registered trademarks of IBM Corporation.

Identity Resolution Engine (IRE) is a trademark of Infoglide Software Corporation.

IDV Solutions and Visual Command Center are trademarks or registered trademarks of IDV Solutions, LLC.

Lenel, the Lenel logo, OnGuard, and the Lenel OpenAccess Alliance Program (OAAP) are trademarks or registered trademarks of Lenel Systems International Inc.

Microsoft, Windows, Windows Vista, Windows Server, SQL Server, Access, Internet Explorer, Excel, PowerPoint, Outlook, Active Directory, Visual Studio, Visual Basic, the Office logo, .NET logo, and Microsoft Gold Independent Software Vendor (ISV) Partner logo are trademarks or registered trademarks of Microsoft Corporation in the U.S. and other countries.

MIR3 is a service mark of MIR3, Inc. inAccountPortal, inTechCenter, inAlertCenter, inEnterprise, and Intelligent Notification are trademarks or registered trademarks of MIR3, Inc.

Mozilla, the Mozilla logo, Firefox, and the Firefox logo are trademarks or registered trademarks of the Mozilla Foundation.

QlikTech, the QlikTech logo, and QlikView are trademarks of QlikTech International AB.

Samsung, Galaxy S, and Galaxy Note are trademarks of Samsung Electronics Co., Ltd.

Wi-Fi is a registered trademark of the Wi-Fi Alliance.

All other products, brands, names, or trademarks mentioned in this document may be trademarks or registered trademarks of their respective owners.

# Contents

<b>System Requirements</b> .....	<b>3</b>
<b>Update Instructions</b> .....	<b>4</b>
Database Upgrade .....	4
Updating SQL Reports .....	5
Perspective Services Update .....	5
<b>Testing Perspective Implementation</b> .....	<b>8</b>
<b>Contact Information</b> .....	<b>9</b>
Technical Support .....	9
PPM 2000 .....	9

# System Requirements **Version 4.6.1**

The following requirements are for Perspective™ operating in a traditional LAN/WAN environment with the web server component running on a separate Microsoft® IIS box. These configurations are for planning purposes only. Please work with your PPM 2000 account manager for a specific assessment of your needs. These requirements apply to Perspective V. 4.6.1 and Perspective Focal Point™ V.1.2.

	Minimum	Recommended
<b>Client Machine</b>		
<b>Processor Speed</b>	1.5 GHz	3 GHz+
<b>Memory</b>	1 GB	2 GB+
<b>Operating System</b>	Windows® Vista SP 3, Windows 7 SP 1, Windows 8, Windows 8.1	
<b>.NET Framework</b>	Version 4.5	
<b>Web Browser – Launch Perspective</b>	Internet Explorer® versions 8.0, 9.0, 10.0, 11.0	
<b>Web Browser – Web Portal</b>	Internet Explorer 10.0+, Chrome™ v29+, Safari® iOS 6, Android™ Browser 4.2+	
<b>Third Party Application</b>	Adobe® Reader® 9.4.0+	
<b>Mobile iOS App</b>	Sun Java™ Runtime Environment 7 U71, 8 U25 <sup>2</sup> QlikView™ Analyzer Plug-in for Internet Explorer <sup>3</sup> iOS 6, iOS 7, iOS 8	
<b>Web Services Server<sup>4</sup></b>		
<b>Available Disk Space<sup>5</sup></b>	1 GB	1 GB
<b>Processor Speed</b>	2 GHz	2 GHz multicore or better
<b>Memory</b>	4 GB	8 GB+
<b>Operating System</b>	Windows Server® 2012, Windows Server 2012 R2 Microsoft Distributed Transaction Coordinator (MSDTC), IIS with net.tcp binding on port 8086	
<b>.NET Framework</b>	Version 4.5 with http and non-http activation	
<b>C++ Runtime Libraries</b>	C++ 2010 SP1 Runtime Libraries (x64) 10.40219	
<b>QlikView™ Server<sup>6</sup></b>	64-bit Version 11.20 SR1	
<b>SQL Server® Machine<sup>4</sup></b>		
<b>Available Disk Space</b>	2 GB	20 GB+, SCSI Hard Drive
<b>Processor Speed</b>	3 GHz	64 bit Server Dual Core or Multiple Processors
<b>Memory</b>	2 GB	4 GB+
<b>Database Server<sup>10</sup></b>	SQL Server® versions 2008 SP3, 2008 R2 SP2, 2012 SP1, SQL 2014	
<b>Reporting Services</b>	SQL Server 2008 Reporting Services, SQL Server 2012 Reporting Services	

**Deployment Note:** Perspective client is deployed as a ClickOnce application, launched from Internet Explorer; it has a zero client footprint and does not require administrative rights to launch.

**Network Note:** If single sign-on authentication or add from Active Directory® is used, the Active Directory Services must be enabled on the Perspective Web Server.

**DTC Note:** Perspective Integration Services requires the Microsoft Distributed Transaction Coordinator (DTC) service to be installed and enabled on the Internet Information Services (IIS) for Windows Web Server and the Microsoft SQL Server for Perspective.

1. This requirement only applies if using the Visual Analysis component.
2. This requirement only applies to Perspective Focal Point.
3. These requirements are for systems with 5 to 25 users. For Perspective systems with more than 25 users, please contact your PPM account manager for a specific assessment of your needs.
4. Depending on the size of your Perspective database, more disk space may be required for Perspective Focal Point and the Workflow component.
5. The net.tcp binding only required if using Dispatching (included with Perspective SOC and Perspective EIM).
6. This requirement only applies to Perspective Focal Point. A limited QlikView Server license is included with Focal Point.

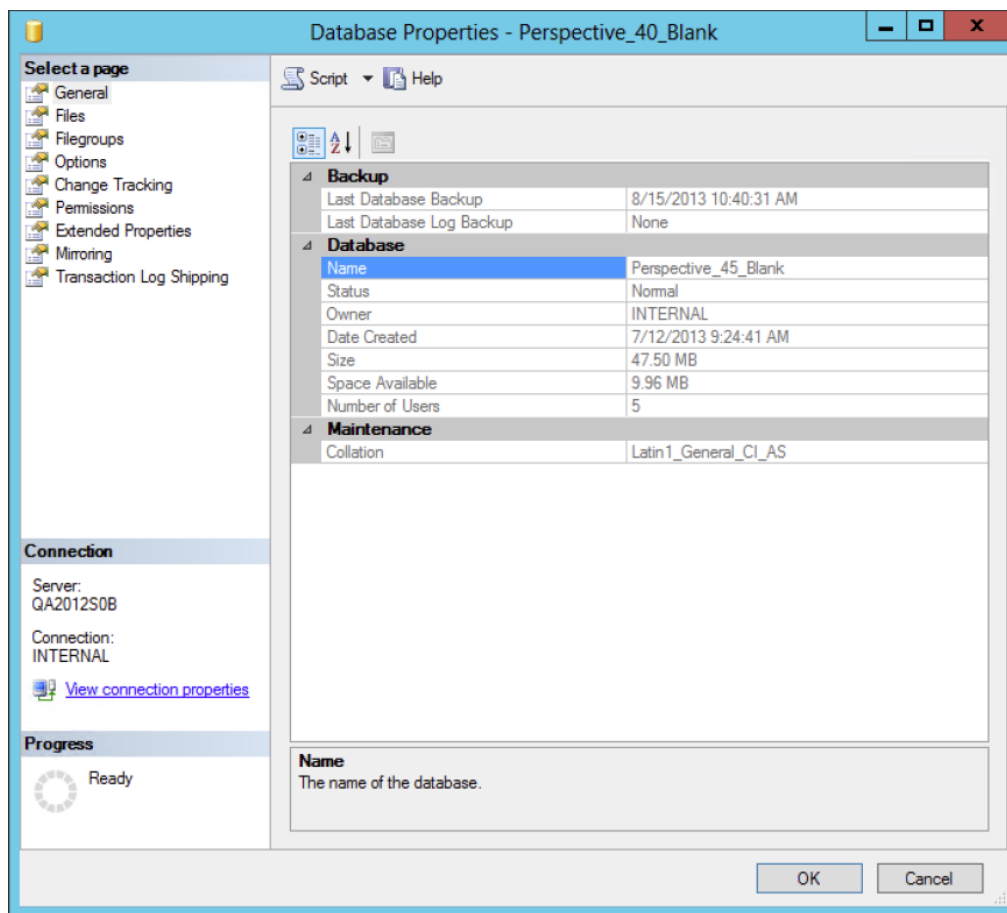
# Update Instructions

## Database Upgrade

*Note: The following instructions are for updating from 4.5 or 4.6 to 4.6.1. To update from Version 4.0 or earlier, go to [PPM's Client Site](#) and refer to the Perspective Update Instructions 1.0 to 4.6.1 document.*

1. Back up your Perspective SQL database.
2. Back up the **Perspective\_Default.config** file in the Perspective Services Virtual Directory. This file contains all necessary information on how your system was configured.
3. Ensure that your database is already upgraded to **Perspective v.4.5**.
4. In the **Compatibility Settings** of your SQL database, ensure your database is in compatibility mode for SQL 2008.

If it's not, open the **Microsoft SQL Management Studio**, expand **Databases**, right-click your Perspective database and select **Properties**. On the left-hand column, select **Options**. In the **Compatibility level** field, select **SQL Server 2008 (100)**.



5. Legacy update scripts are provided in the previous updates folder with this installation. Please verify which version of Perspective you are running before proceeding with upgrading your database. If you require assistance please contact Technical for assistance.
6. Update the Perspective database using the **Perspective Install > Database Setup > Update** folder. Using a SQL query tool (e.g., SQL Server Management Studio), execute update scripts against the Perspective database.
  - a. Run **SQLScript\_Update\_45\_To\_46.sql**.
  - b. Run **SQLScript\_Update\_4.6.0\_to\_4.6.1**.
  - c. **Optional:** The SQL script **BackFill\_SiteRollups.sql** can be run to check if a child value (Building, Location, or Section) has a latitude and longitude. If it's empty, it will match to the parent value. If all of the items in the tier are in the same location and you're comfortable with this being implemented for mapping purposes, you can set up the Site only, and then use this to populate the lower tiers. If you're a Hosted client, please make this request via our Support team at 1-877-776-2995 once you have all of your Site Rollups updated.
  - d. **Optional:** The SQL script **Update\_Inc\_Act\_Site\_Geos.sql** can be run to populate the Geo Co-ordinates of all Activities and Incidents with a SiteRollup associated to them. This will only be run against Activities and Incidents without Geo Co-ordinates.
7. Repeat step 6 for each Perspective database you're running (e.g., test, production, archive).

## Updating SQL Reports

8. Update reports using the **Perspective Install > Reports Setup** folder (please refer to *Perspective Installation Guide* for more detailed outline of SQL reports setup):
  - a. Edit the **PublishServerReports.bat** file to target the SQL Reporting Services server.
  - b. Save and execute the file.

*Note: If you're using Windows authentication, additional configuration of the Reports data source may be required.*

## Perspective Services Update

For more information on running the installs, refer to the *Perspective Installation Guide*.

9. Uninstall **Perspective Services**. In Windows 7 and earlier versions, click **Start > Control Panel > Programs > Programs and Features > Uninstall**.

If you're running Windows 8 or 10, uninstall **Perspective Services** by clicking **PC Settings > Control Panel > Programs > Uninstall a program**.

*Note: If updating from version 2.1 or earlier, you will need to have already uninstalled the Perspective client from each client machine.*

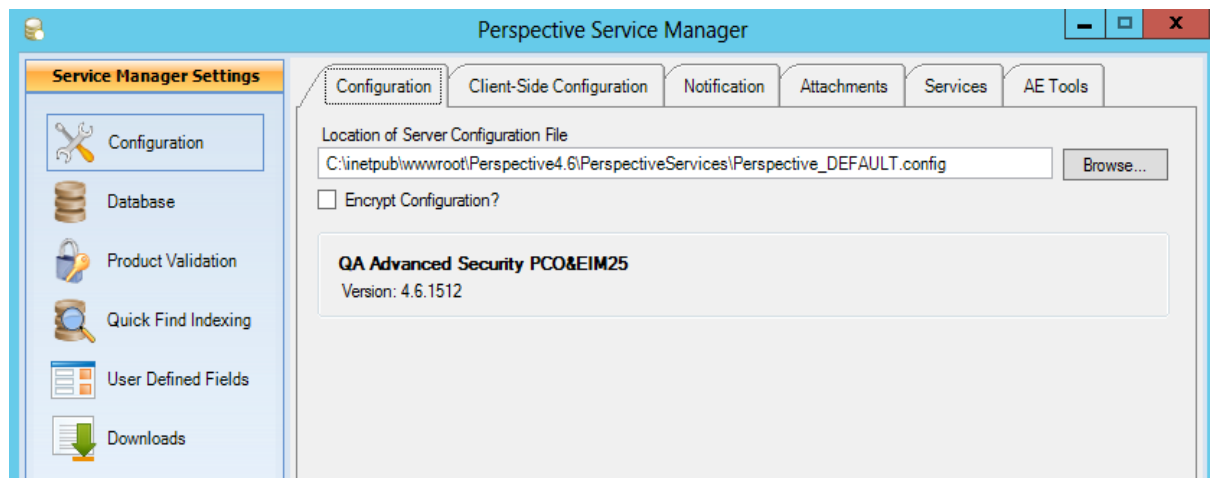
10. If installed, uninstall any earlier versions of **Perspective Integration Services** and **Service Manager**. Check your Perspective directory and IIS for any remnants of your previous Perspective Services installation. Remove any remaining files or folders.
11. Install Perspective Services 4.6 using the **Perspective Install > Web Service Setup > Perspective Services** folder. Run (as an administrator) **Perspective.Services.exe** to install the updated Perspective Services.

If this is your first time working with Perspective Services, please read through the *Perspective Installation Guide*.

If you're completing a Custom Install and your edition includes the Dispatching component (**SOC** or **EIM**), ensure that Real Time Services is installed. Refer to the Installation Guide for configuration details.

*Note: If Perspective Services prompts you to install C++ runtime libraries, refer to the Standard Install > Perspective Services (Application Web Server) section of the Perspective Installation Guide.*

12. Install Perspective Service Manager (see the *Perspective Installation Guide* for details).
13. Configure connections using Perspective Service Manager:
  - a. To access Perspective Service Manager, open it from your desktop or go to C:\Program Files\PPM 2000 Inc\Perspective\4.6\ServiceManager. Launch **Perspective 4.6 Service Manager** as an **administrator**. You will be asked to provide the Database Connection information. Refer to the *Perspective Installation Guide* if needed.
  - b. Under the **Configuration** tab, verify the location specified in the **Location of Server Configuration File** field. The field should be automatically populated with the default location of the **Perspective\_Default.config** file in the **Perspective Services Virtual Directory**. If necessary, use the **Browse** button to point to the correct location.



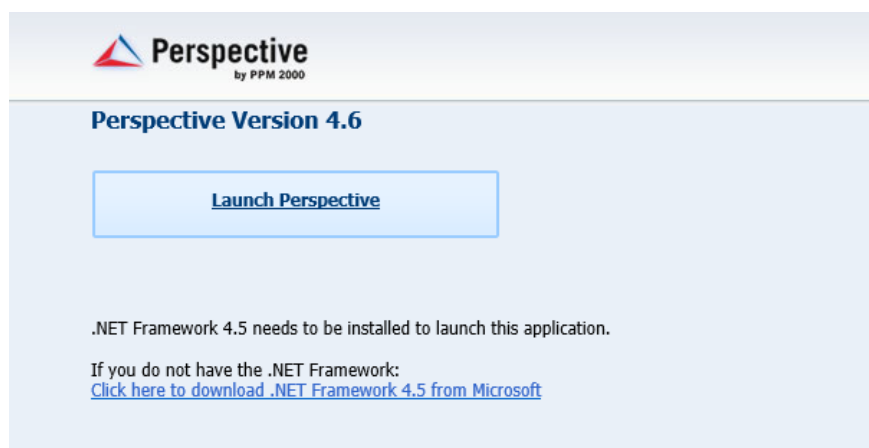
- c. Under the **Database** tab, enter the primary database information. This information can be copied from within the **Perspective\_Default.config** backup file. Add secondary databases, if required.
- d. Under the **Product Validation** tab, enter your **Hard Coded Company Name** and **Master Key**, and click **Validate**.

*Note: This step requires an Internet connection to download your encrypted license file from the licensing server. If your web server can't access the Internet, contact Technical Support at 1-877-776-2995 to get a license file for validation.*

- e. In the **Client-Side Configuration** sub-tab, enter the **Server URL** for the client folder if the field is empty.
- f. Verify the **Notification** and **Attachments** settings, and make any required changes.
- g. Verify the **Quick Find Indexing** and **Services** settings, and make any required changes.
- h. Click **Save Changes**, then click **Yes** when prompted for confirmation.
- i. Close Perspective Service Manager and restart IIS.

For detailed instructions on using the Perspective Service Manager, see the *Perspective Installation Guide*.

14. Launch the Perspective Version 4.6 client from the host Perspective Services default web page (e.g., <http://IISServer/PerspectiveServices>) on each client machine. Your default web page should look like the screenshot below. Refer to the *Perspective Installation Guide* for more information.

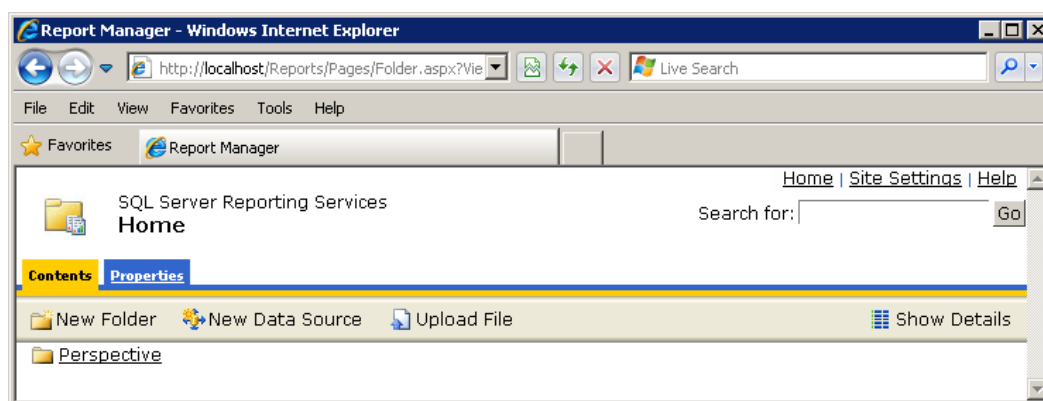


*Note: If installing clients using the MSI package, ensure that previously installed Perspective applications on client machines have been uninstalled first. To install Perspective on client machines using the MSI package, please refer to the Perspective Installation Guide.*

# Testing Perspective Implementation

1. Go to the Perspective Services URL and confirm that the page loads properly:  
**http://<localhost>/perspectiveservices**, where **<localhost>** is the appropriate local host address on your network.
2. Go to the Perspective Services page and confirm that the page loads properly:  
**http://<localhost>/perspectiveservices/service.asmx**, where **<localhost>** is the appropriate local host address on your network.
3. Go to the Report Manager page and confirm that the page loads properly:  
**http://<reportservername>/reports**, where **<reportservername>** is the appropriate address for the reports server on your network.

*Note: If your Report Manager page does not display correctly, run the **PublishServerReports.bat** file included in the **Perspective Install > Reports Setup** folder.*



4. Logon to the Perspective client—preferably not on the server itself—using your Perspective administrator user name and password.
5. Once you have logged on successfully, click on the **Reports** button in the Navigation pane (on the left-hand side of the screen) and confirm that all reports are listed. The easiest way to confirm that the client-side reports are working is to verify that there are reports listed under the **Detail Reports** heading, such as the Incident, Person and Vehicle Reports.
6. To confirm that the server-side reports are working, select **Test Report** and click **Preview**. If you receive an error message, please call the Technical Support team at 1-877-776-2995.

*Note: The Report version should display as 4.6, while the database version should display as 4.6.0.*

7. To also confirm you are connected to the correct database, run the **Workgroup List** report and verify the workgroups listed.



# Contact Information

## Technical Support

Toll Free: 1-877-776-2995  
Phone: (780) 448-0616  
Email: support@ppm2000.com

## PPM 2000

Toll Free: 1-888-PPM-9PPM (1-888-776-9776)  
Phone: (780) 448-0616  
Fax: (780) 448-0618  
Email: information@ppm2000.com  
Website: <http://www.ppm2000.com>