

ALL ABOUT YOU!

8TH ANNUAL PERSPECTIVE USERS' CONFERENCE

MARCH 1- 2 , 2016

PERSPECTIVE:
powered by **RESOLVER**

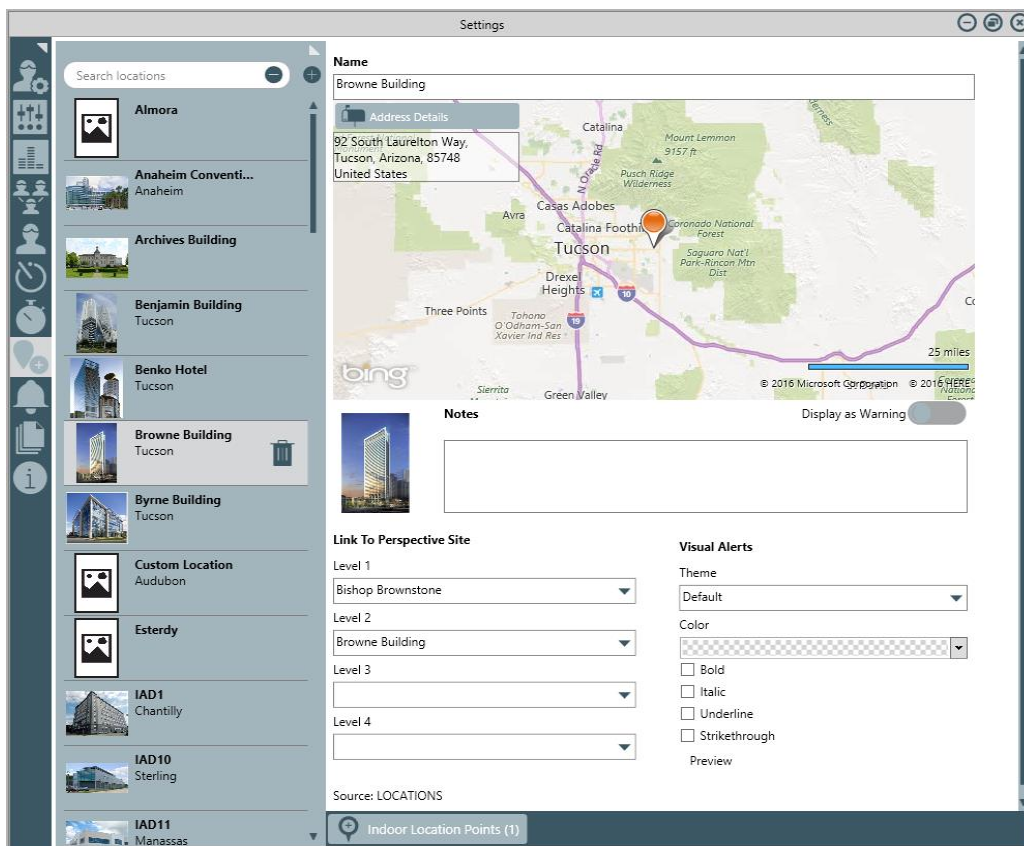
Dispatch 5.0 – Administration

Dispatch Users

Unlike previous versions, a Person record and user account must first be created in Perspective Administration before you can create an account in Dispatch. Dispatch account types include Dispatch/Officer, Administrator, or Reviewer. Users with Reviewer privileges have read-only access to the application.

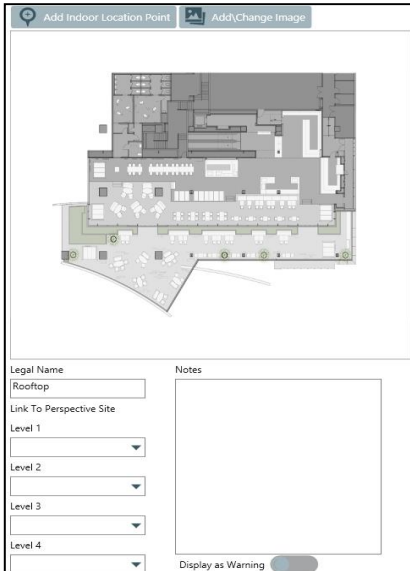
Locations

Locations now allow you to upload images, such as a photograph, floor plan, or blueprint of a location to provide visual references for your dispatchers and officers in the field. This information can then be analyzed further once a dispatch is closed and moved to Perspective as an activity.



Indoor Location Points

Indoor location points can be created to identify exact locations and provide visual cues for your dispatchers and officers with images such as photos, maps, and floor plans. Indoor location points are created within a larger location and can be associated with your Perspective sites.



Additional Features

Dispatch numbers can be reset at a specific time and frequency and you can configure how long closed dispatch records are kept in the Closed Dispatches panel. You can also create visual alerts on the default or High Contract theme, create dispatch templates, organize your security personnel into zones and teams, adjust the names and order of dispatch priorities, and much more.

Dispatch Numbers

Reset Dispatch Number: Weekly

Reset at: 6:18 AM

Dispatch Number will reset next Monday at the time specified

Visual Alerts

Officer Status	Organization Status	Dispatch Status	Task Status
Available	Cleared	Assigned	Assigned
Theme	Theme	Theme	Theme
Default	Default	Default	Default
Color	Color	Color	Color
<input type="checkbox"/> Bold	<input type="checkbox"/> Bold	<input type="checkbox"/> Bold	<input type="checkbox"/> Bold
<input type="checkbox"/> Italic	<input type="checkbox"/> Italic	<input type="checkbox"/> Italic	<input type="checkbox"/> Italic
<input type="checkbox"/> Underline	<input type="checkbox"/> Underline	<input type="checkbox"/> Underline	<input type="checkbox"/> Underline
<input type="checkbox"/> Strikethrough	<input type="checkbox"/> Strikethrough	<input type="checkbox"/> Strikethrough	<input type="checkbox"/> Strikethrough
	Preview		

Closed Dispatches

Remove Closed Dispatches older than 1 day(s)

Closed Dispatches will be removed from the Closed Dispatches panel at 12:00am when specified