

:RESOLVER

PERSPECTIVE UPDATE INSTRUCTIONS

Version 1.0 to 5.0

April 2016

Perspective by Resolver Inc.™

Version 5.0

Distributed April 2016

Copyright © 2016 Resolver Inc. and its licensors. All rights reserved.

Resolver, the Resolver logo, Perspective by Resolver, Dispatch by Resolver, the Perspective by Resolver logo, Perspective Focal Point, and the Incident management from every angle logo are trademarks or registered trademarks of Resolver Inc.

Information in this document is subject to change without notice.

Companies, names, and data used in the examples herein are fictitious unless otherwise noted.

Although every precaution has been taken in preparation of this document, Resolver Inc. assumes no responsibility for errors or omissions.

Neither is any liability assumed for damages resulting from the use of the information contained herein.

Permission to modify and distribute this document strictly for the purpose of internal user training is hereby granted, provided that it is made evident the document has been modified, and that all copies contain all proprietary notices set forth in or on the original version.

Resolver Inc. assumes no responsibility for errors or omissions resulting from the modification of this document. Resolver Inc. expressly waives all liability assumed for damages resulting from the modification of the information contained herein. Notwithstanding the permission granted herein, no part of this document may otherwise be reproduced, transmitted, disseminated or distributed, in any form or by any means, electronic or mechanical, for any other purpose, without the express written permission of Resolver Inc.

Microsoft, Windows, Windows Vista, Windows Server, SQL Server, Access, Internet Explorer, Excel, PowerPoint, Outlook, Active Directory, Visual Studio, Visual Basic, the Office logo, .NET logo, and Microsoft Gold Independent Software Vendor (ISV) Partner logo are trademarks or registered trademarks of Microsoft Corporation in the U.S. and other countries.

Wi-Fi is a registered trademark of the Wi-Fi Alliance.

All other products, brands, names, or trademarks mentioned in this document may be trademarks or registered trademarks of their respective owners

Table of Contents

- SYSTEM REQUIREMENTS (AIR & ICM) 1**
- SYSTEM REQUIREMENTS (SOC & EIM).....2**
- Perspective Version 1.0 to Version 4.0.2: Upgrade to Version 5.0.....3**
 - Important Notes About SQL Server.....3
- Update Instructions4**
 - Set Up Secure Sockets Layer (SSL) on Internet Information Services (IIS) 18
- Database Restore (Dispatch Scheduling Service and Service Clustering)19**
 - Scheduling Services 21
- Testing Perspective Implementation24**
- Contact Information26**
 - Technical Support..... 26
 - Resolver Inc. 26

SYSTEM REQUIREMENTS (AIR & ICM) Version 5.0

The following requirements are for Perspective™ **AIR** and **ICM** editions operating in a traditional LAN/WAN environment with the Web server component running on a separate Microsoft® IIS box. These specs are for planning purposes only and apply to Perspective™ V.5.0 and Focal Point™ V.1.2. Please contact your Resolver representative for a specific assessment of your needs.

*NOTE: Meeting the **Minimum** system requirements means you can run the application successfully, but it may not provide the best performance. Meeting the **Recommended** requirements will offer a significantly better experience.*

	MINIMUM	RECOMMENDED
CLIENT MACHINE		
Processor Speed	1.5 GHz	2 GHz+
Memory	1 GB	2 GB
Operating System	Windows® Vista SP 3, Windows® 7 SP 1, Windows® 8.1, Windows® 10	
.NET Framework	Version 4.5.2	
Web Browser – Launch Perspective	Internet Explorer® 11 ⁷ , Edge	
Web Browser – Web Portal	Internet Explorer® 11 ⁷ , Edge, Chrome®, Safari® iOS 7, Android® Browser 4.2+	
Third Party Application	Adobe Reader® 9.4.0+ Sun Java® Runtime Environment 7 U71, 8 U25 ¹ , QlikView® Analyzer Plug-in for IE ²	
Mobile iOS App	iOS 7, iOS 8, iOS 9	
WEB SERVER MACHINE³ (ON PREMISE ONLY)		
Available Disk Space⁴	1 GB	1 GB
Processor Speed	2 GHz	2 GHz Dual-Core
Memory	4 GB	4 GB
Operating System	Windows Server® 2012, Windows Server® 2012 R2, IIS® with Secure-Channel configured (HTTPS/SSL)	
.NET Framework	Version 4.5 with HTTP and non-HTTP activation	
C++ Runtime Libraries	C++ 2010 SP1 Runtime Libraries (x64) 10.40219	
QlikView® Server⁵	64-bit Version 11.20 SR1	
DATABASE SERVER MACHINE³ (ON PREMISE ONLY)		
Available Disk Space	2 GB	20 GB+
Processor Speed	3 GHz	64-bit server dual-core or multi-processors
Memory	2 GB	4 GB+
Database Server⁶	SQL Server® 2008 SP4, SQL Server® 2008 R2 SP3, SQL Server® 2012 SP1, SQL Server® 2014	
Reporting Services	SQL Server® 2008, SQL Server® 2012 Reporting Services, SQL Server® 2014 Reporting Services	

1. This requirement only applies if using Visual Analysis.
2. This requirement only applies to Perspective Focal Point.
3. These requirements apply to systems with 5-25 users. For systems with 25+ users, contact your Resolver account manager for more information.
4. Depending on the size of the Perspective database, more disk space may be needed for Focal Point and Workflow.
5. This requirement applies only to Focal Point. A limited QlikView™ Server license is included with Focal Point.
6. Only SQL Server Enterprise Edition is supported for indexing on audit tables.
7. For Windows® Vista SP 3, IE 9 is supported. IE Compatibility View is not supported.

Deployment Note: The Perspective client is deployed as a ClickOnce application, launched from IE. It has a zero client footprint and doesn't require administrative rights to launch.

Network Note: If single sign-on authentication or add from Active Directory is used, Active Directory Services must be enabled on the Perspective Web Server.

Internet Note: Internet connectivity on the Client Machine is required for full functionality.

SYSTEM REQUIREMENTS (SOC & EIM) Version 5.0

The following requirements are for Perspective™ **SOC** and **EIM** editions operating in a traditional LAN/WAN environment with the Web server component running on a separate Microsoft® IIS box. These specs are for planning purposes only and apply to Perspective™ V.5.0, Dispatch, and Focal Point™ V.1.2. Please contact your Resolver representative for a specific assessment of your needs.

*NOTE: Meeting the **Minimum** system requirements means you can run the application successfully, but it may not provide the best performance. Meeting the **Recommended** requirements will offer a significantly better experience.*

	MINIMUM	RECOMMENDED
CLIENT MACHINE		
Processor Speed	2 GHz dual-core	2.5 GHz dual-core
Memory	2 GB	4 GB
Operating System	Windows® Vista SP 3, Windows® 7 SP 1, Windows® 8.1, Windows® 10	
.NET Framework	Version 4.5.2	
Web Browser – Launch Perspective	Internet Explorer® 11 ⁸ , Edge	
Web Browser – Web Portal	Internet Explorer® 11 ⁸ , Edge, Chrome®, Safari® iOS 7, Android® Browser 4.2+	
Third Party Application	Adobe Reader® 9.4.0+ Sun Java® Runtime Environment 7 U71, 8 U25 ¹ , QlikView® Analyzer Plug-in for IE ²	
Mobile iOS App	iOS 7, iOS 8, iOS 9	
Officer Mobile	iOS 8, iOS 9	
WEB SERVER MACHINE³ (ON PREMISE ONLY)		
Available Disk Space⁴	1 GB	1 GB
Processor Speed	2 GHz dual-core	2.5 GHz dual-core
Memory	4 GB	4 GB
Operating System	Windows Server® 2012, Windows Server® 2012 R2 IIS with WebSockets enabled ⁵ and Secure-Channel configured (HTTPS/SSL)	
.NET Framework	Version 4.5 with HTTP and non-HTTP activation	
C++ Runtime Libraries	C++ 2010 SP1 Runtime Libraries (x64) 10.40219	
QlikView™ Server⁶	64-bit Version 11.20 SR1	
DATABASE SERVER MACHINE³ (ON PREMISE ONLY)		
Available Disk Space	2 GB	20+ GB
Processor Speed	2 GHz dual-core	64-bit server dual-core or multi-processors
Memory	2 GB	4+ GB
Database Server⁷	SQL Server® 2008 SP4, SQL Server® 2008 R2 SP3, SQL Server® 2012 SP3, SQL Server® 2014 SP1	
Reporting Services	SQL Server® 2008, SQL Server® 2012 Reporting Services, SQL Server® 2014 Reporting Services	

1. This requirement only applies if using Visual Analysis.
2. This requirement only applies to Perspective Focal Point.
3. These requirements apply to systems with 5-25 users. For systems with 25+ users, contact your Resolver account manager for more information.
4. Depending on the size of the Perspective database, more disk space may be needed for Focal Point and Workflow.
5. Net.TCP binding on port 808 is required only if using DispatchLog.
6. This requirement applies only to Focal Point. A limited QlikView™ Server license is included with Focal Point.
7. Only SQL Server Enterprise Edition is supported for indexing on audit tables.
8. For Windows® Vista SP 3, IE 9 is supported. IE Compatibility View is not supported.

Deployment Note: The Perspective client is deployed as a ClickOnce application, launched from IE. It has a zero client footprint and doesn't require administrative rights to launch.

Network Note: If single sign-on authentication or add from Active Directory is used, Active Directory Services must be enabled on the Perspective Web Server.

Internet Note: Internet connectivity on the Client Machine is required for full functionality.



Perspective Version 1.0 to Version 4.0.2: Upgrade to Version 5.0

This guide is for users upgrading to the latest version of Perspective from the following previous versions:

- Version 1.0
- Version 1.1.1
- Version 1.1.2
- Version 1.2
- Version 1.3
- Version 1.3.1
- Version 2.0
- Version 2.1.1
- Version 2.5
- Version 3.0
- Version 3.1
- Version 3.2
- Version 3.3
- Version 4.0
- Version 4.0.2

If upgrading from 4.5 or later, please refer to the [Perspective Update Instructions 5.0](#) document.

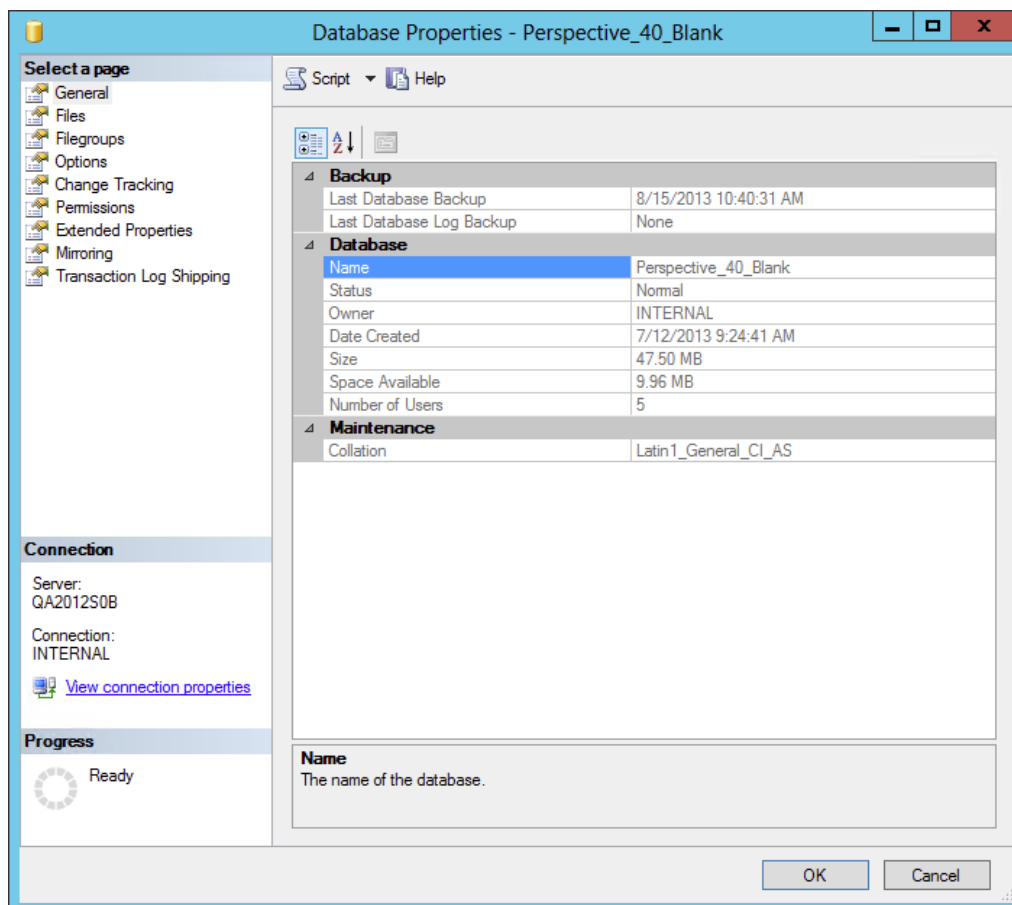
Important Notes About SQL Server

Only SQL Server Enterprise Edition is supported for indexing on audit tables. If you're upgrading Perspective using a non-enterprise version of SQL Server, you'll encounter errors related to indexing on audit tables. However, you will still be able to successfully upgrade despite these error messages, as they will not negatively affect the application.

Update Instructions

1. Back up your Perspective SQL database.
2. Back up the **Perspective_Default.config** file in the Perspective Services Virtual Directory. This file contains all necessary information on how your system was configured.
3. In the **Compatibility Settings** of your SQL database, ensure your database is in compatibility mode for SQL 2008.

If it is not, open the **Microsoft SQL Management Studio**, expand **Databases**, right-click your Perspective database and select **Properties**. On the left-hand column, select **Options**. In the **Compatibility level** field, select **SQL Server 2008 (100)**.



For more information on running the installs, refer to the *Perspective Installation Guide*.

4. If installing the **SOC** or **EIM** editions of Perspective, install the **WebSocket Protocol** on your webserver, if it is not already installed.

5. Uninstall **Perspective Services**. Click **Start** > Launch the **Control Panel** > Navigate to **Programs and Features** > Select **Perspective Services** > **Uninstall** > Follow the prompts displayed onscreen to uninstall **Perspective Services**.
6. If installed, uninstall any earlier versions of **Service Manager**. Check your Perspective directory and IIS for any remnants of your previous Perspective Services installation. Remove any remaining files or folders.
7. Run the following update packages and SQL scripts to update your version of Perspective to Version 4.0.2. *Note: Once these update packages and scripts have been successfully run, you will run additional scripts to then upgrade to Version 5.0, as outlined in step 8 below.*

To move to Version 4.0.2 from	Open folder	Run update packages and SQL scripts
	1_Update_10_To_111	a. Version_1_0_to_1_1_1.exe b. Perspective_v1_Update.sql c. Drop_Functions_1_1.exe d. Create_Functions_1_1.exe
	2_Update_111_To_112	e. Perspective112_Update.exe f. SQLPackage_112_Sample_Update.exe
Version 1.0	3_Update_112_To_12	g. SQLPackage_Update_112_To_12.exe h. SQL_Script_Post_Update_112_To_12.sql
	4_Update_12_To_13	i. SQLPackage_Update_12_To_13.exe
	5_Update_13_To_20	j. SQLScript_Update_13_To_20.sql
	6_Update_20_To_21	k. SQLScript_Update_20_To_21.sql
	7_Update_21_To_25	l. SQLScript_Update_21_To_25.sql
	8_Update_25_To_30	m. SQLScript_Update_25_To_302.sql
	9_Update_30_To_31	n. SQLScript_Update_30_To_31.sql

To move to Version 4.0.2 from	Open folder	Run update packages and SQL scripts
	<i>10_Update_31_To_32</i>	<ul style="list-style-type: none"> o. SQLScript_Update_31_To_32_part1.sql p. SQLScript_Update_31_To_32_part2.sql q. SQLScript_Update_31_To_32_part3a.sql r. SQLScript_Update_31_To_32_part3b.sql s. SQLScript_Update_31_To_32_part3c.sql t. SQLScript_Update_31_To_32_part3d.sql u. SQLScript_Update_31_To_32_part3e.sql v. SQLScript_Update_31_To_32_part3f.sql w. SQLScript_Update_31_To_32_part3g.sql x. SQLScript_Update_31_To_32_part4.sql
	<i>11_Update_32_To_33</i>	y. SQLScript_Update_32_To_33.sql
	<i>12_Update_33_to_40_to_402</i>	<ul style="list-style-type: none"> z. SQLScript_Update_33_To_40.sql aa. SQLScript_Update_40_To_402.sql
Version 1.1	<i>2_Update_111_To_112</i>	a. Perspective112_Update.exe
	<i>3_Update_112_To_12</i>	<ul style="list-style-type: none"> b. SQLPackage_Update_112_To_12.exe c. SQL_Script_Post_Update_112_To_12.sql
	<i>4_Update_12_To_13</i>	d. SQLPackage_Update_12_To_13.exe
	<i>5_Update_13_To_20</i>	e. SQLScript_Update_13_To_20.sql

To move to Version 4.0.2 from	Open folder	Run update packages and SQL scripts
		SQLScript_Update_20_To_21.sql
	<i>6_Update_20_To_21</i>	f. SQLScript_Update_21_To_25.sql
	<i>7_Update_21_To_25</i>	g. SQLScript_Update_25_To_302.sql
	<i>8_Update_25_To_30</i>	h. SQLScript_Update_30_To_31.sql
	<i>9_Update_30_To_31</i>	i. SQLScript_Update_31_To_32_part1.sql j. SQLScript_Update_31_To_32_part2.sql k. SQLScript_Update_31_To_32_part3a.s ql l. SQLScript_Update_31_To_32_part3b.s ql m. SQLScript_Update_31_To_32_part3c.s ql n. SQLScript_Update_31_To_32_part3d.s ql o. SQLScript_Update_31_To_32_part3e.s ql p. SQLScript_Update_31_To_32_part3f.s ql q. SQLScript_Update_31_To_32_part3g.s ql r. SQLScript_Update_31_To_32_part4.sql
	<i>10_Update_31_To_32</i>	s. SQLScript_Update_32_To_33.sql
	<i>11_Update_32_To_33</i>	t. SQLScript_Update_33_To_40.sql u. SQLScript_Update_40_To_402.sql
	<i>4_Update_12_To_13</i>	a. SQLPackage_Update_12_To_13.exe

To move to Version 4.0.2 from	Open folder	Run update packages and SQL scripts
Version 1.1.2 Production	5_Update_13_To_20	b. SQLScript_Update_13_To_20.sql
	6_Update_20_To_21	c. SQLScript_Update_20_To_21.sql
	7_Update_21_To_25	d. SQLScript_Update_21_To_25.sql
	8_Update_25_To_30	e. SQLScript_Update_25_To_302.sql
	9_Update_30_To_31	f. SQLScript_Update_30_To_31.sql
	10_Update_31_To_32	g. SQLScript_Update_31_To_32_part1.sql
		h. SQLScript_Update_31_To_32_part2.sql
		i. SQLScript_Update_31_To_32_part3a.s ql
		j. SQLScript_Update_31_To_32_part3b.s ql
		k. SQLScript_Update_31_To_32_part3c.s ql
		l. SQLScript_Update_31_To_32_part3d.s ql
m. SQLScript_Update_31_To_32_part3e.s ql		
n. SQLScript_Update_31_To_32_part3f.sq l		
11_Update_32_To_33	q. SQLScript_Update_32_To_33.sql	
12_Update_33_to_40_to_402	r. SQLScript_Update_33_To_40.sql	
	s. SQLScript_Update_40_To_402.sql	

To move to Version 4.0.2 from	Open folder	Run update packages and SQL scripts
Version 1.2	4_Update_12_To_13	a. SQLPackage_Update_12_To_13.exe
	5_Update_13_To_20	b. SQLScript_Update_13_To_20.sql
	6_Update_20_To_21	c. SQLScript_Update_20_To_21.sql
	7_Update_21_To_25	d. SQLScript_Update_21_To_25.sql
	8_Update_25_To_30	e. SQLScript_Update_25_To_302.sql
	9_Update_30_To_31	f. SQLScript_Update_30_To_31.sql
	10_Update_31_To_32	g. SQLScript_Update_31_To_32_part1.sql
		h. SQLScript_Update_31_To_32_part2.sql
		i. SQLScript_Update_31_To_32_part3a.s ql
		j. SQLScript_Update_31_To_32_part3b.s ql
		k. SQLScript_Update_31_To_32_part3c.s ql
l. SQLScript_Update_31_To_32_part3d.s ql		
m. SQLScript_Update_31_To_32_part3e.s ql		
n. SQLScript_Update_31_To_32_part3f.sq l		
11_Update_32_To_33	q. SQLScript_Update_32_To_33.sql	

To move to Version 4.0.2 from	Open folder	Run update packages and SQL scripts
	<i>12_Update_33_to_40_to_402</i>	r. SQLScript_Update_33_To_40.sql s. SQLScript_Update_40_To_402.sql
Version 1.3 or 1.3.1	5_Update_13_To_20	a. SQLScript_Update_13_To_20.sql
	6_Update_20_To_21	b. SQLScript_Update_20_To_21.sql
	7_Update_21_To_25	c. SQLScript_Update_21_To_25.sql
	8_Update_25_To_30	d. SQLScript_Update_25_To_302.sql
	9_Update_30_To_31	e. SQLScript_Update_30_To_31.sql
	10_Update_31_To_32	f. SQLScript_Update_31_To_32_part1.sql
		g. SQLScript_Update_31_To_32_part2.sql
		h. SQLScript_Update_31_To_32_part3a.s ql
		i. SQLScript_Update_31_To_32_part3b.s ql
		j. SQLScript_Update_31_To_32_part3c.s ql
		k. SQLScript_Update_31_To_32_part3d.s ql
l. SQLScript_Update_31_To_32_part3e.s ql		
m. SQLScript_Update_31_To_32_part3f.s l		
n. SQLScript_Update_31_To_32_part3g.s ql		
o. SQLScript_Update_31_To_32_part4.sql		
11_Update_32_To_33	p. SQLScript_Update_32_To_33.sql	

To move to Version 4.0.2 from	Open folder	Run update packages and SQL scripts
	<i>12_Update_33_to_40_to_402</i>	q. SQLScript_Update_33_To_40.sql r. SQLScript_Update_40_To_402.sql
Version 2.0 or 2.0.1	<i>6_Update_20_To_21</i>	a. SQLScript_Update_20_To_21.sql
	<i>7_Update_21_To_25</i>	b. SQLScript_Update_21_To_25.sql
	<i>8_Update_25_To_30</i>	c. SQLScript_Update_25_To_302.sql
	<i>9_Update_30_To_31</i>	d. SQLScript_Update_30_To_31.sql
	<i>10_Update_31_To_32</i>	e. SQLScript_Update_31_To_32_part1.sql f. SQLScript_Update_31_To_32_part2.sql g. SQLScript_Update_31_To_32_part3a.s ql h. SQLScript_Update_31_To_32_part3b.s ql i. SQLScript_Update_31_To_32_part3c.s ql j. SQLScript_Update_31_To_32_part3d.s ql k. SQLScript_Update_31_To_32_part3e.s ql l. SQLScript_Update_31_To_32_part3f.s ql m. SQLScript_Update_31_To_32_part3g.s ql n. SQLScript_Update_31_To_32_part4.sql
	<i>11_Update_32_To_33</i>	o. SQLScript_Update_32_To_33.sql

To move to Version 4.0.2 from	Open folder	Run update packages and SQL scripts
	<i>12_Update_33_to_40_to_402</i>	<ul style="list-style-type: none"> p. SQLScript_Update_33_To_40.sql q. SQLScript_Update_40_To_402.sql
Version 2.1 or 2.1.1	<i>7_Update_21_To_25</i>	<ul style="list-style-type: none"> b. SQLScript_Update_21_To_25.sql
	<i>8_Update_25_To_30</i>	<ul style="list-style-type: none"> b. SQLScript_Update_25_To_302.sql
	<i>9_Update_30_To_31</i>	<ul style="list-style-type: none"> c. SQLScript_Update_30_To_31.sql
	<i>10_Update_31_To_32</i>	<ul style="list-style-type: none"> d. SQLScript_Update_31_To_32_part1.sql e. SQLScript_Update_31_To_32_part2.sql f. SQLScript_Update_31_To_32_part3a.sql g. SQLScript_Update_31_To_32_part3b.sql h. SQLScript_Update_31_To_32_part3c.sql i. SQLScript_Update_31_To_32_part3d.sql j. SQLScript_Update_31_To_32_part3e.sql k. SQLScript_Update_31_To_32_part3f.sql l. SQLScript_Update_31_To_32_part3g.sql m. SQLScript_Update_31_To_32_part4.sql
	<i>11_Update_32_To_33</i>	<ul style="list-style-type: none"> n. SQLScript_Update_32_To_33.sql
	<i>12_Update_33_to_40_to_402</i>	<ul style="list-style-type: none"> o. SQLScript_Update_33_To_40.sql p. SQLScript_Update_40_To_402.sql

To move to Version 4.0.2 from	Open folder	Run update packages and SQL scripts
Version 2.5	8_Update_25_To_30	a. SQLScript_Update_25_To_302.sql
	9_Update_30_To_31	b. SQLScript_Update_30_To_31.sql
	10_Update_31_To_32	c. SQLScript_Update_31_To_32_part1.sql
		d. SQLScript_Update_31_To_32_part2.sql
		e. SQLScript_Update_31_To_32_part3a.sql
		f. SQLScript_Update_31_To_32_part3b.sql
		g. SQLScript_Update_31_To_32_part3c.sql
		h. SQLScript_Update_31_To_32_part3d.sql
		i. SQLScript_Update_31_To_32_part3e.sql
		j. SQLScript_Update_31_To_32_part3f.sql
		k. SQLScript_Update_31_To_32_part3g.sql
		l. SQLScript_Update_31_To_32_part4.sql
	11_Update_32_To_33	m. SQLScript_Update_32_To_33.sql
	12_Update_33_to_40_to_402	n. SQLScript_Update_33_To_40.sql
		o. SQLScript_Update_40_To_402.sql
Version 3.0	9_Update_30_To_31	a. SQLScript_Update_30_To_31.sql
	10_Update_31_To_32	b. SQLScript_Update_31_To_32_part1.sql
		c. SQLScript_Update_31_To_32_part2.sql

To move to Version 4.0.2 from	Open folder	Run update packages and SQL scripts
		<ul style="list-style-type: none"> d. SQLScript_Update_31_To_32_part3a.sql e. SQLScript_Update_31_To_32_part3b.sql f. SQLScript_Update_31_To_32_part3c.sql g. SQLScript_Update_31_To_32_part3d.sql h. SQLScript_Update_31_To_32_part3e.sql i. SQLScript_Update_31_To_32_part3f.sql j. SQLScript_Update_31_To_32_part3g.sql k. SQLScript_Update_31_To_32_part4.sql
	11_Update_32_To_33	l. SQLScript_Update_32_To_33.sql
	12_Update_33_to_40_to_402	<ul style="list-style-type: none"> m. SQLScript_Update_33_To_40.sql n. SQLScript_Update_40_To_402.sql
Version 3.1	10_Update_31_To_32	<ul style="list-style-type: none"> a. SQLScript_Update_31_To_32_part1.sql b. SQLScript_Update_31_To_32_part2.sql c. SQLScript_Update_31_To_32_part3a.sql d. SQLScript_Update_31_To_32_part3b.sql e. SQLScript_Update_31_To_32_part3c.sql f. SQLScript_Update_31_To_32_part3d.sql

To move to Version 4.0.2 from	Open folder	Run update packages and SQL scripts
		g. SQLScript_Update_31_To_32_part3e.sql h. SQLScript_Update_31_To_32_part3f.sql i. SQLScript_Update_31_To_32_part3g.sql j. SQLScript_Update_31_To_32_part4.sql
	<i>11_Update_32_To_33</i>	k. SQLScript_Update_32_To_33.sql
	<i>12_Update_33_to_40_to_402</i>	l. SQLScript_Update_33_To_40.sql m. SQLScript_Update_40_To_402.sql
Version 3.2	<i>11_Update_32_To_33</i>	a. SQLScript_Update_32_To_33.sql
	<i>12_Update_33_to_40_to_402</i>	b. SQLScript_Update_33_To_40.sql c. SQLScript_Update_40_To_402.sql
Version 3.3	<i>12_Update_33_to_40_to_402</i>	a. SQLScript_Update_33_To_40.sql b. SQLScript_Update_40_To_402.sql

8. Update the Perspective database by using a SQL query tool (e.g., SQL Server Management Studio) to execute the following scripts, which will update your system to version 5.0, against the Perspective database:
 - a. Run **SQLScript_Update_402_To_45.sql** (located in the **Update > Previous Updates** folder)
 - b. Run **SQLScript_Update_45_To_46.sql** (located in the **Update > Previous Updates** folder)
 - c. Run **SQLScript_Update_4.6.0_to_4.6.1** (located in the **Update > Previous Updates** folder)
 - d. Run **SQLScript_Update_4.6.1_to_4.6.2** (located in the **Update > Previous Updates** folder)

- e. Run **SQLScript_Update_4.6.2_to_5.0.0.sql** (located in the **Perspective Install > Database Setup > Update** folder).
 - f. **Optional:** The SQL script **BackFill_SiteRollups.sql** (located in the **Update > Previous Updates** folder) can be run to check to if a child value (Building, Location, or Section) has a Latitude and Longitude. If it's empty, it will match to the parent value. If all of the items in the tier are in the same location and you're comfortable with this being implemented for mapping purposes, you can set up the Site only, and then use this to populate the lower tiers. If you're a Hosted client, please make this request via our Support team at 1-877-776-2995 once you have all of your Site Rollups updated.
 - g. **Optional:** The SQL script **Update_Inc_Act_Site_Geos.sql** can be run to populate the Geo Co-ordinates of all Activities and Incidents with a SiteRollup associated to them. This will only be run against Activities and Incidents without Geo Co-ordinates.
9. Repeat step 9 for each Perspective database you're running (e.g., test, production, archive).
 10. Update reports using the **Perspective Install > Reports Setup** folder (please refer to Perspective Installation Guide for more detailed outline of SQL reports setup):
 - a. Edit the **PublishServerReports.bat** file to target the SQL Reporting Services server.
 - b. Save and execute the file.

Note: If you're using Windows authentication, additional configuration of the Reports data source may be required.

For more information on running the installs, refer to the Perspective Installation Guide.

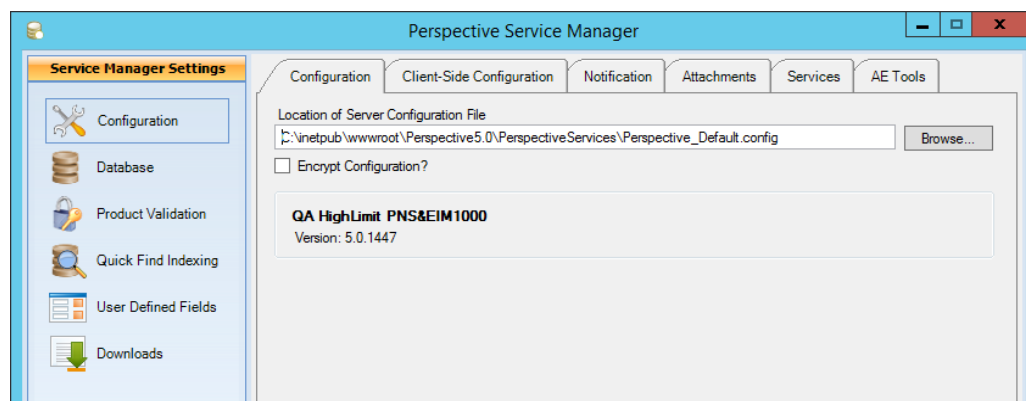
11. Check your Perspective directory and IIS for any remnants of your previous Perspective Services installation. Remove any remaining files or folders.
12. Install Perspective Services 5.0 using the **Perspective Install > Web Service Setup > Perspective Services** folder. Run (as an administrator) **Perspective.Services.exe** to install the updated Perspective Services.

If this is your first time working with Perspective Services, please read through the *Perspective Installation Guide*.

If you're completing a Custom Install and your edition includes the **DispatchLog** component (**SOC** or **EIM**), ensure that Real Time Services is installed. Refer to the Installation Guide for configuration details.

Note: If Perspective Services prompts you to install C++ runtime libraries, refer to the Standard Install > Perspective Services (Application Web Server) section of the Perspective Installation Guide.

13. Install **Perspective Service Manager** (see the *Perspective Installation Guide* for details).
14. Configure connections using Perspective Service Manager:
 - a. To access Perspective Service Manager, open it from your desktop or go to C:\Program Files\Resolver Inc\Perspective\5.0\ServiceManager\. Launch **Perspective 5.0 Service Manager** as an **administrator**. You will be asked to provide the Database Connection information. Refer to the *Perspective Installation Guide* if needed.
 - b. Under the **Configuration** tab, verify the location specified in the **Location of Server Configuration File** field. The field should be automatically populated with the default location of the **Perspective_Default.config** file in the **Perspective Services Virtual Directory**. If necessary, use the **Browse** button to point to the correct location.



- c. Under the **Database** tab, enter the primary database information. This information can be copied from within the **Perspective_Default.config** backup file. Add secondary databases, if required.
- d. Under the **Product Validation** tab, enter your **Company Name** and **Master Key**, and click **Validate**.

Note: This step requires an Internet connection in order to download your encrypted license file from the licensing server. If your web server can't access the Internet, contact Technical Support at 1-877-776-2995 to get a license file for validation.
- e. In the **Client-Side Configuration** sub-tab, enter the **Server URL** for the client folder if the field is empty.
- f. Verify the **Notification** and **Attachments** settings, and make any required changes.
- g. Verify the **Quick Find Indexing** and **Services** settings, and make any required changes.
- h. Click **Save Changes**, then click **Yes** when prompted for confirmation.
- i. Close Perspective Service Manager and restart IIS.

For detailed instructions on using the Perspective Service Manager, see the *Perspective Installation Guide*.

15. Launch the Perspective Version 5.0 client from the host Perspective Services default web page (e.g., <https://<servername>/PerspectiveServices>) on each client machine. Your default web page should look like the screenshot below. Refer to the *Perspective Installation Guide* for more information.

Note: Following the configuration of the Web Server, please ensure application initialization has taken place so that end users do not experience delays with initial page loading. After any IIS reset or configuration, navigate to

<https://<servername>/IntegrationServices/service.svc> to begin the application initialization.



IMPORTANT NOTE: The MSI URL for Version 5.0 has changed to the following:

- <https://<servername>/PerspectiveServices/?opt=0>

If installing clients using the MSI package, ensure that previously installed Perspective applications on client machines have been uninstalled first. To install Perspective on client machines using the MSI package, please refer to the [Perspective Installation Guide](#).

Set Up Secure Sockets Layer (SSL) on Internet Information Services (IIS)

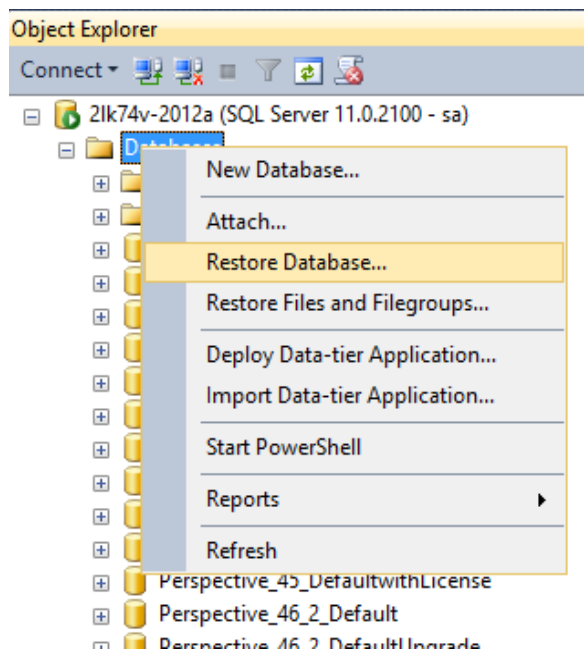
To set up SSL on IIS, follow the instructions on the [Microsoft IIS](#) website.

Database Restore (Dispatch Scheduling Service and Service Clustering)

*Note: This section applies to users installing Perspective **SOC** and **EIM** editions. If you're installing **AIR** or **ICM**, skip this section.*

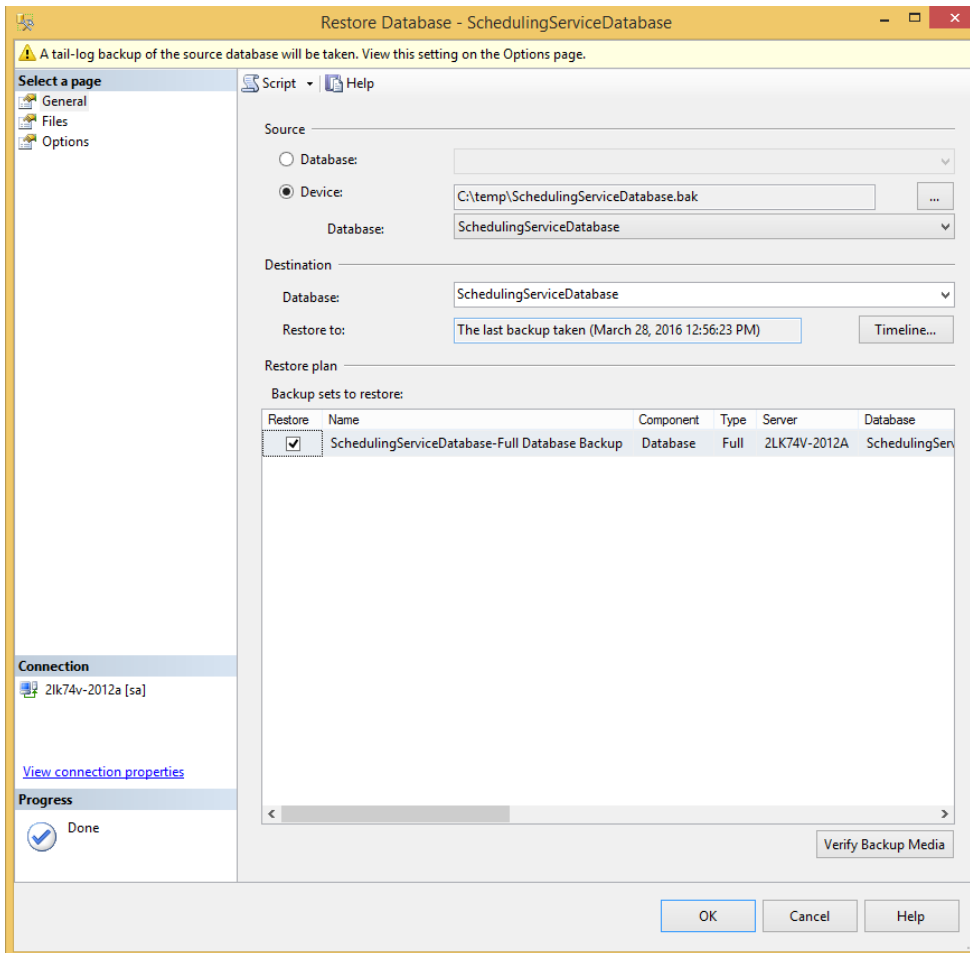
Follow these steps below to restore both the **Dispatch Scheduling Service** database and the **Service Clustering** database.

1. Open **SQL Management Studio**.
2. Right-click **Object Explorer** and click **Restore** Database.

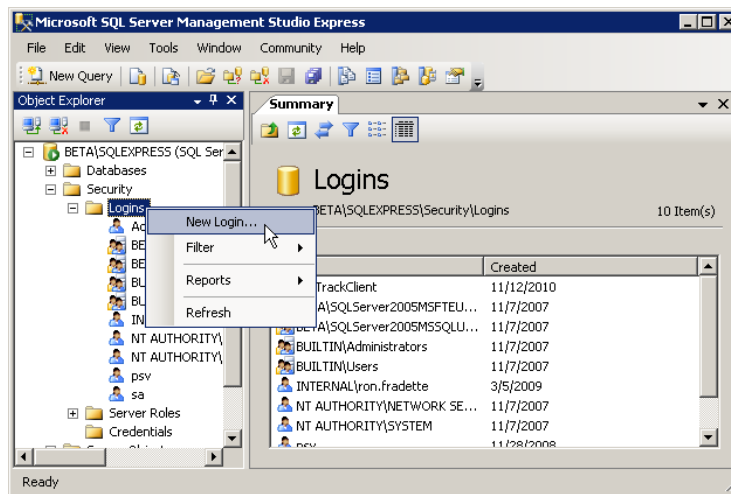


3. Navigate to the location of **Dispatching Schedule Service** database backup file.

*Note: Standard backups are found in **Perspective Install > Database Setup > New**. If you're unsure which database to use, contact your Perspective Administrator.*



4. Click **OK** to restore
5. Create a new SQL user that will be used by Perspective to connect to the SQL Server:
 - a. Launch Microsoft SQL Server Management Studio. In the menu on your left, expand the **Security** node, right-click **Logins**, and select **New Login**.

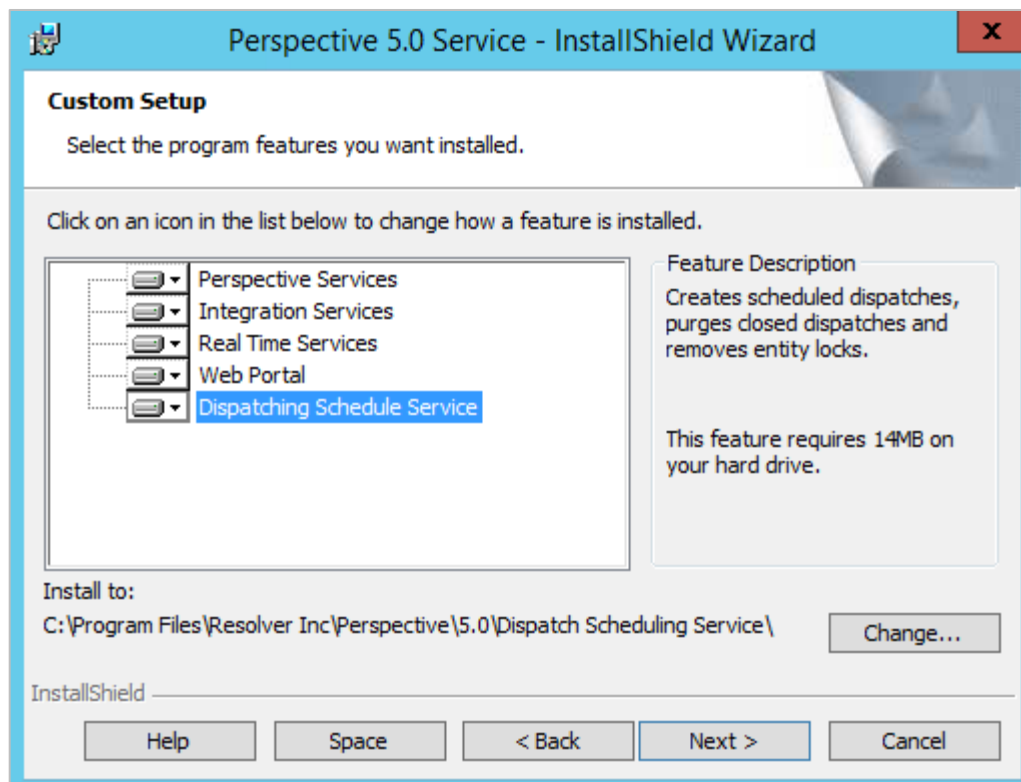


- b. In the **Login – New** form, under the **General** page, type in the **Login Name** and modify the rest of the options according to your preference.
- c. Open **User Mapping**. For both the **Dispatch Scheduling** and **Service Clustering** databases, ensure the account has either **db_owner** **OR** **db_datareader** and **db_datawriter** role membership rights, then click **OK**.

Scheduling Services

*Note: The following changes apply only to users installing the **SOC** and **EIM** editions of Perspective. If you're installing the **AIR** and **ICM** editions, skip this section.*

1. Navigate to install location of the scheduling service. If you completed a default installation of Perspective Services, it's located at **C:\Program Files\Resolver Inc\Perspective\5.0\Dispatch Scheduling Service**. If you completed a custom installation, this location is the path that was specified in the InstallShield Wizard.



2. Open the **Connections.xml** file.
3. Enter the service folder information to show the Integration Services virtual directory (i.e. **<servername>/integrationservices**).

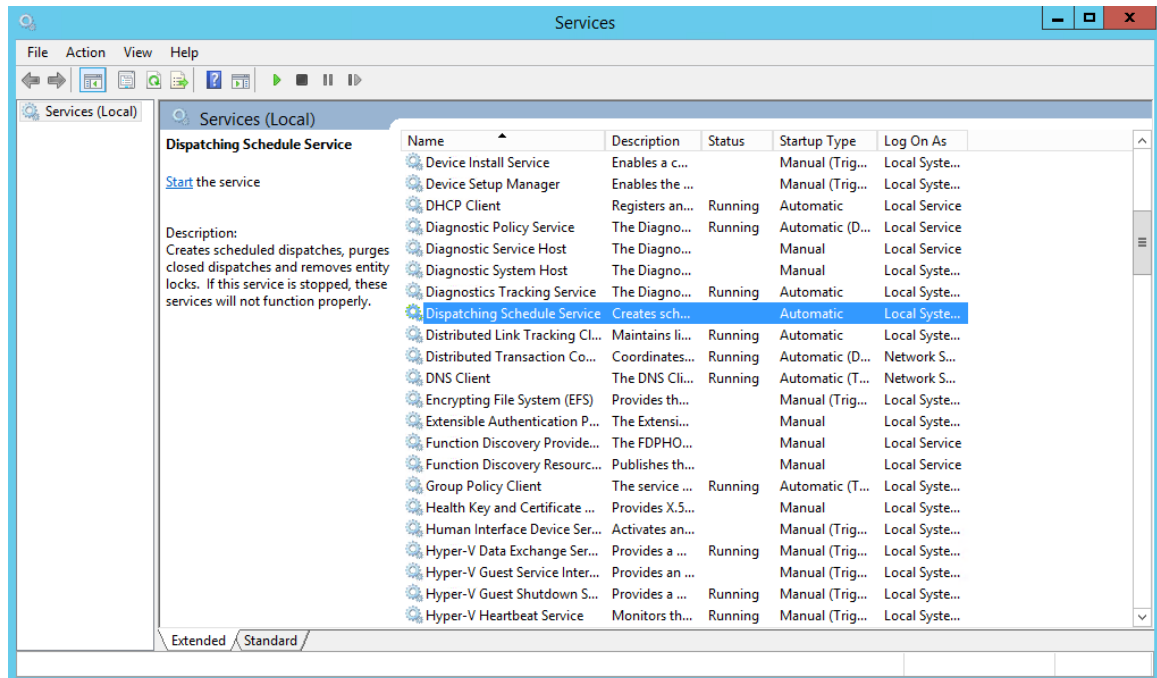
*Note: If **Scheduling Services** and **Integration Services** are installed on the same machine, the Service Folder element(s) in the **Connections.xml** file must contain either an IPv4 address or the localhost alias.*

4. Save your changes to the **Connections.xml** file then close.
5. Open the **SchedulingServices.exe.config** file.
6. Under **appSettings**, enter the database connection string to point to the Scheduling Service database. For example:

```
<add key="DataBaseConnectionString" value="Data
Source==<dbserver\dbinstance>;Initial Catalog=<dbname>;user
id=<user>;password=<password>;Application Name=Integration Services" />
```

7. Save your changes to the **SchedulingServices.exe.config** file then close.

- Open **Windows Services**.
- Click on **Dispatching Schedule Service**.



- Click the  icon or right-click **Dispatching Schedule Service** then click **Start**.

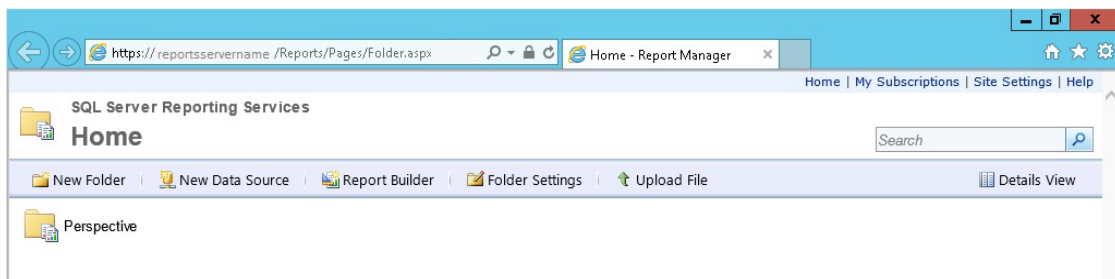
Testing Perspective Implementation

Once you have completed the steps outlined on the previous sections, please go through the following steps to ensure that all Perspective's components have been set up properly.

*Note: Following the configuration of the Web Server, please ensure application initialization has taken place so that end users do not experience delays with initial page loading. After any IIS reset or configuration, navigate to **https://<servername>/IntegrationServices/service.svc** to begin the application initialization.*

1. Go to the Perspective Services URL and confirm that the page loads properly:
https://<localhost>/perspectiveservices, where **<localhost>** is the appropriate local host address on your network.
2. Go to the Perspective Services page and confirm that the page loads properly:
https://<localhost>/perspectiveservices/service.asmx, where **<localhost>** is the appropriate local host address on your network.
3. Go to the Report Manager page and confirm that the page loads properly:
http://<reportservername>/reports, where **<reportservername>** is the appropriate address for the reports server on your network.

*Note: If your Report Manager page does not display correctly, run the **PublishServerReports.bat** file included in the **Perspective Install > Reports Setup** folder.*



4. Log on to the Perspective client—preferably not on the server itself—using your Perspective administrator user name and password.
5. Once you have logged on successfully, click on the **Reports** button in the Navigation pane (on the left-hand side of the screen) and confirm that all reports are listed. The easiest way to confirm that the client-side reports are working is to verify that there are reports listed under the **Detail Reports** heading, such as the Incident, Person and Vehicle Reports.
6. To also confirm you are connected to the correct database, run the **Workgroup List** report and verify the workgroups listed.
7. To confirm that the server-side reports are working, try running the **Test Report** under the **<Administrative Only>** node listed. If you receive an error message, see the

Troubleshooting Perspective & SQL Reporting Services on the Resolver Support site for more information.

Note: Both the Report version and database version should display as 5.0.

Contact Information

Technical Support

Toll Free: 1-877-776-2995
Phone: (780) 448-0616
Email: support@resolver.com
Website: <https://support.resolver.com>

Resolver Inc.

Toll Free: 1-888-776-9776
Phone: (780) 448-0616
Fax: (780) 448-0618
Email: information@resolver.com
Website: <http://www.resolver.com>