



## GRC CLOUD RELEASE NOTES

**Version 8.3**

October 2016

GRC Cloud by Resolver Inc.™

Version 8.3

Distributed October 2016

Copyright © 2016 Resolver Inc. and its licensors. All rights reserved.

Resolver, the Resolver logo, GRC Cloud by Resolver, and the GRC Cloud by Resolver logo are trademarks or registered trademarks of Resolver Inc. Information in this document is subject to change without notice.

Companies, names, and data used in the examples herein are fictitious unless otherwise noted.

Although every precaution has been taken in preparation of this document, Resolver Inc. assumes no responsibility for errors or omissions. Neither is any liability assumed for damages resulting from the use of the information contained herein.

Permission to modify and distribute this document strictly for the purpose of internal user training is hereby granted, provided that it is made evident the document has been modified, and that all copies contain all proprietary notices set forth in or on the original version. Resolver Inc. assumes no responsibility for errors or omissions resulting from the modification of this document. Resolver Inc. expressly waives all liability assumed for damages resulting from the modification of the information contained herein. Notwithstanding the permission granted herein, no part of this document may otherwise be reproduced, transmitted, disseminated or distributed, in any form or by any means, electronic or mechanical, for any other purpose, without the express written permission of Resolver Inc.

Microsoft, Windows, Windows Vista, Windows Server, SQL Server, Access, Internet Explorer, Excel, PowerPoint, Outlook, Active Directory, Visual Studio, Visual Basic, the Office logo, .NET logo, and Microsoft Gold Independent Software Vendor (ISV) Partner logo are trademarks or registered trademarks of Microsoft Corporation in the U.S. and other countries.

Wi-Fi is a registered trademark of the Wi-Fi Alliance.

All other products, brands, names, or trademarks mentioned in this document may be trademarks or registered trademarks of their respective owners.

# Table of Contents

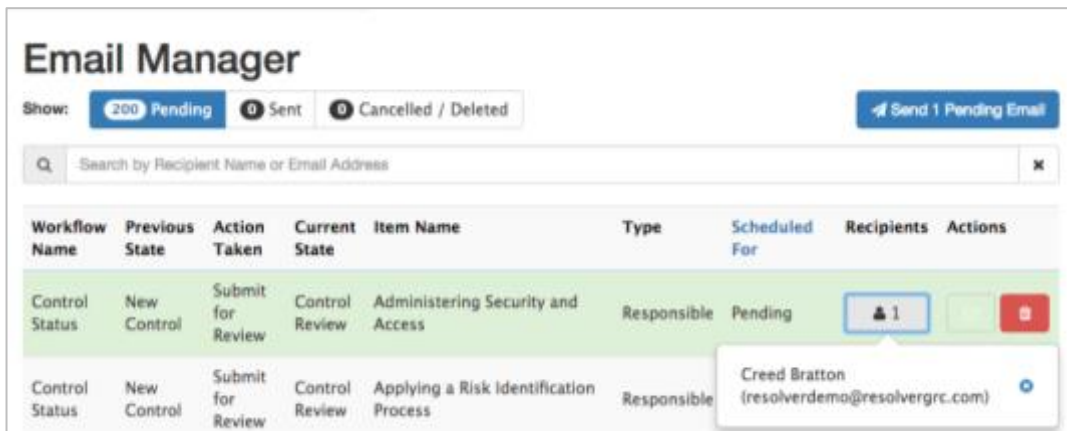
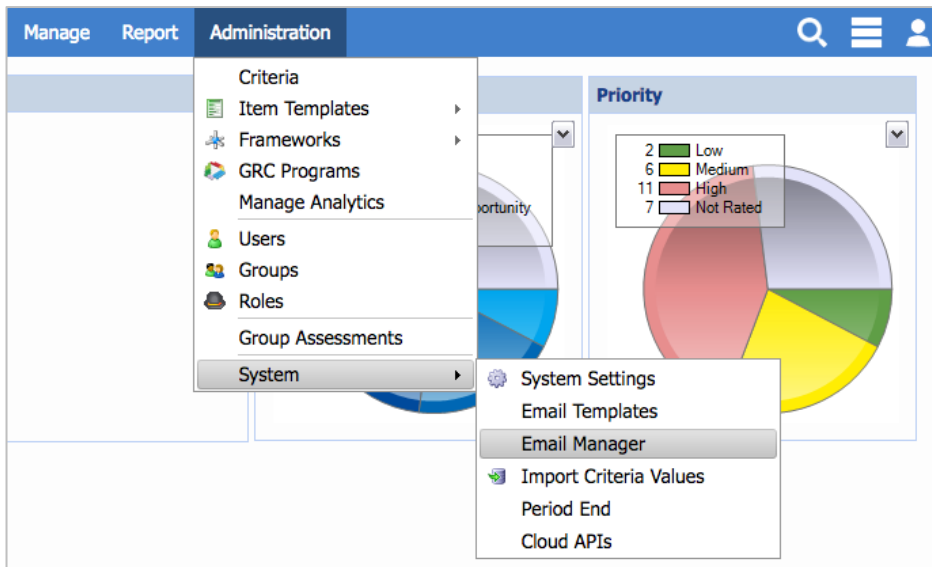
<b>GRC Cloud 8.3</b> .....	<b>1</b>
Email Manager .....	1
API .....	2
Other Enhancements .....	2
<b>Contact Information</b> .....	<b>3</b>
Technical Support .....	3
Resolver Inc. ....	3

# GRC Cloud 8.3

## Email Manager

By popular request, we've introduced the new Email Manager. This feature provides administrative users with full email management capabilities and allows you to:

- Review and manage pending email notifications
- Send or cancel emails on demand
- Manage recipients
- Review sent and cancelled emails



## API

With the GRC Cloud API, you can keep your data synced through a real-time connection between system activity of other applications and GRC Cloud. You can also transfer data or trigger events without manual intervention.

The available endpoints include:

- Update criteria
- Update item attributes
- Create an item (non-framework)
- Delete an item
- Engage workflow triggers
- Add an attachment to an item
- Calculate a function

## Other Enhancements

- You can reorder your programs and activities to best suit your process and how your users interact with the focus picker.
- The workflow engine can now use a numeric field value to determine which path an item should take in the workflow.
- Rich text fields are now being sent to the data warehouse.
- After selecting an item in the focus picker, the item will be removed from the list below it.
- Other release-related maintenance.

## Contact Information

### Technical Support

**Toll Free:** 1-877-776-2995  
**Phone:** (780) 448-0616  
**Email:** [support@resolver.com](mailto:support@resolver.com)  
**Website:** <https://support.resolver.com>

### Resolver Inc.

**Toll Free:** 1-888-776-9776  
**Phone:** (780) 448-0616  
**Fax:** (780) 448-0618  
**Email:** [information@resolver.com](mailto:information@resolver.com)  
**Website:** <http://www.resolver.com>